



# Coastal News

email: [coastalnews@mapua.gen.nz](mailto:coastalnews@mapua.gen.nz)

covering **Mapua & Ruby Bay**,  
run by volunteers

## *Mapua Library going for 60 years*

Many of you will be surprised to know the library has been in existence for over 60 years. Mapua and districts have experienced huge population growth recently, and as a result, one of the library committee's current goals is to lift the library's profile in the community. We are doing this in a number of ways.

At the moment we are revamping the children's section of the library. We have received a grant from the Scottwood Trust for the purchase of Children & Young Adults' books. This has prompted us to extend the shelving available in the children's area, and to create a children's non-fiction and reference section. In order to encourage children to take advantage of our increased selection of books, we intend to liaise with local schools more closely in 2007.

Some of the children's reference books are internet-linked, as is, for example, one of our latest acquisitions – The Encyclopaedia of World Geography. We don't, however, offer an internet service at the library at present. As a low-tech alternative we will have plenty of notepaper available for borrowers to record websites which can be checked elsewhere. We want to be as user-friendly as we can given the constraints of being an independent library relying on grants and fund-raising to exist.

Many of the events we host are designed either to encourage people into the library, or to raise funds (or both!). Our next major event is the Affordable Art Show, which will be held at Mapua Hall 23 – 25 February 2007. This event was hugely successful last time we held it, and we fully expect February's show to be even better. It's the perfect mix of community, art and culture and involves a great deal of good will on the part of the artists, and a great deal of willing voluntary labour by library members. Another event planned for 2007 is celebrating the present library building's 5th birthday combined with the launch of our logo design. Donny Bastion is working on final details of the design for us. This logo will be used on a sign in the grounds of the library building, and on all our promotional material

and stationery. This is another community effort with the winning design coming from a competition held in local schools, and with development input from Graeme Stradling and Donny Bastion. Tegan Lamont from Mapua School was the creative girl who came up with the original concept.

We have received a Tasman District Council Rates Grant of \$2000, which we have designated for the purchase of hobby and craft books. Once we have spent this grant, we will have a promotional campaign on these books in the library to let you know what is there to borrow. Any hobby or craft group interested in staging a display of their activity in the library during this period, can let me know (Sarah, ph 540-2698). If you ring in, we will be inclined to look at buying books covering your area of interest when purchasing.

We keep statistics on the usage of the library so we have a clear idea of how effectively we operate. This information is used to back up our applications for grants and in future planning for library operations. At present we have around 1000 borrowers and issue around 1000 books a month. It costs around \$4000 to run the library each year, excluding the purchase of new books, and we fund-raise anything between \$1000 and \$5000 a year, depending on activities undertaken. All this on



Merry  
Christmas

*The Coastal  
News team  
would like to  
extend our very  
best wishes for  
the festive season to all our  
readers*



Tegan Lamont

voluntary labour. So next time you are thinking, "I really should put money in the Pig for my overdue book," make sure you do! It all helps ease the load.

Our next fund-raising venture is the library's Christmas Hamper Raffle. We will be outside the 4 Square Store in Mapua 7th to 9th December selling raffle tickets for a very scrumptious hamper. Just the thing to back up your Christmas activities.

### A selection of new books:

**Children's Fiction:** Andy Stanton's You're a Bad Man Mr Gunn, and for reluctant readers, The Cat On the Mat Is Flat by Andy Griffiths.

**Children's Non-fiction:** A new Lauren Child picture book, We Can Honestly Look After Your Dog, and another Gecko Press translation, Elfrida the Sheep by Klara Fall

**For Young Adults:** The second in John Marsden's Ellie series, Incurable; and the latest Artemis Fowl, Artemis Fowl and the Lost Colony (Eion Colfer)

**Adult Fiction:** The latest Philippa Gregory historical romance, The Boleyn Girl. Sara Kate Lynch's tale of winery shenanigans, The House of Peine. Sarah Water's Mann Booker short-listed book, The Night Watch. The biblical musings of C K Stead's My Name Was Judas. Carl Hiaasen's new Florida romp, Nature Girl. **Adult Non-fiction:** The biography of aviation pioneer Tim Wallis, Hurricane Tim. Motueka Valley pioneer story, Strangerland. Theologist Lloyd Geering's autobiography, Wrestling With God. Amazing Australian Florence Broadbent's story, A Life By Design.

### Library Hours:

Tuesday, Friday & Saturday: 2pm – 4.30pm  
Wednesday 5pm – 7pm  
Thursday 10am – 12.30pm

### Christmas hours:

Closed Dec 25 & 26, and closed Jan 1, otherwise open on the usual days and times.

**Christmas stories and poems for the children read by Patsy at the library, 3pm to 4pm Saturday December 23.**

*Sarah McLeod*

### DAVID KEMP, PAINTER/ SCULPTOR

Change of Address Notice:  
formerly 16 Higgs Rd

NOW Dominion Road, R D 1, Upper Moutere  
(where the sawdust sign is)

Ph: 540 3720, dk@davidkemp.co.nz

www.davidkemp.co.nz

Studio usually open Thurs-Sun, or by appointment

### Richmond Physiotherapy Centre MAPUA CLINIC

**Monday, Wednesday, Friday – 2-6pm**

69 Aranui Rd

540-2216 or 544-0327

For any back or neck pain – acute or chronic  
Muscle aches, Strains, Sports injuries,  
Injury prevention, Work place injuries, Joint pain,  
Exercise and fitness advice

**See Helen Macdonald at Mapua**

## *New Name chosen*

The Mapua Ruby Bay and District Walkway group has become Mapua Districts Cycle and Walkways Group. At a meeting held 31 October it was agreed to change the name to better reflect the group's interests in cycling issues as well as walkways.

We are an informal, issues-based lobby group with around 30 members who are actively involved in monitoring walkway and cycleway development in our area. We have been in existence since 2002, although there have been earlier groups with similar aims.

Members who attended the meeting discussed and revised our Priority Action List, and discussed the latest council moves to protect the Old Mill walkway and reserve from erosion. There is the possibility of our group being involved in a practical way with future planting in this area.

It was agreed that a group of three or four members would set up a meeting with relevant TDC staff members to explore current walkway and cycleway issues before the end of the year.

Our group's next meeting will be held in March or April next year. Enquiries to Sarah, ph 540-2698, or Kate, ph 540-2130.

*Sarah McLeod*

## *Rural Women*

The Mapua-Mahana branch of Rural Women NZ met recently for our monthly meeting at Wilma Tansley's home, Ruby Bay. The day started with a pot luck lunch enjoyed by the 12 women present. There was much hilarity and lively conversation around the table.

During the afternoon, we listened to Jean Pratt who told us about the submissions that were presented to the Nelson-Marlborough DHB to retain the services of the IDSS. Their efforts had a successful outcome. Next she told us about her experiences as an "Oxford Aunt". This agency provides residential care for the elderly and infirm. The agency comes to New Zealand to recruit staff.

Jean was a companion for an old lady. She drove her from place to place to play bridge. She looked after Belinda Butler, a descendant of William Makepeace Thackeray. Jean had to supervise Thackeray's manuscripts when students came to the house. She also drove Belinda (who was 94) around London.

This year our branch is celebrating our 70th birthday. We welcome new members. We meet monthly, on the second Wednesday of the month. Contact, 548-5771.

*Rosina Robb*

## *Pets are susceptible to poisons*

Unfortunately, our pets, particularly pet dogs, are quite susceptible to many of the poisons which we routinely use to kill off unwanted pests such as slugs and snails in the garden, rats, rabbits and possums. Recently we have had a spate of serious accidental poisonings so it is timely to remind everyone of the common poisons which are laid around the home and their symptoms.

### **Rat Bait**

Rat bait is the most common poisoning that we see. Most rat baits work by inhibiting the body's ability to clot blood and therefore lead to death from excessive bleeding. They take up to seven days to take full effect. Symptoms include lethargy, weakness, vomiting blood, passing stools with blood in them, difficulty in breathing, pale gums and collapse. Clinically affected animals are treated with Vitamin K supplementation and, depending on the severity of illness, a blood or plasma transfusion may be given. Blood tests will often be run to confirm a diagnosis and monitor response to treatment.

### **Slug and Snail Bait**

Slug baits generally cause neurological symptoms such as trembling muscles, shaking, wobbliness and drooling.

Symptoms are usually seen within minutes to hours of the bait being ingested and can cause death very quickly. There is no antidote to these poisons and treatment is based on removing the poison from the body and keeping the animal sedated to control convulsions.

If you are using any of these poisons around your house or garden try to ensure that your pets do not have direct access to them. If you see them eat or suspect that they have eaten any poisons then contact us immediately. Fortunately all of our recent cases of poisonings have survived due to their owners contacting us in good time.

**NOTE:** the Mapua clinic will be closed over the Christmas and New Year statutory holidays BUT open the days in between and a vet will be on call 24 hours as usual.

*Dr Paula Short*

## Mapua School PTA **CAR BOOT SALE**

Sunday 17 Dec, 8:30am – Midday

Venue – Mapua School Car Park

**\$10 per space**

**- limited spaces - no traders -**

Get Ready for Christmas

Lots of Stalls - Find that TREASURE you have been looking for - or Sell that "Treasure" that has sat in the garage for a wee while - Toys - Clothing - plenty of other bargains to be had !!!

**Bookings and payments to  
Lorraine Langridge 540 3740**

Come and have a chat and meet the locals

🕒 Holistic Health Training Ltd

## **Aerobics**

in Mapua, Upper Moutere and Wakefield

Classes end for the summer break  
on Friday Dec 15<sup>th</sup> and resume on  
**Monday January 22<sup>nd</sup>**

*Please phone Lynda 543 2268  
if you want to register for a session  
that you are not currently attending  
as classes are very busy.*

Formats next year include  
Pilates, Low Impact, Step/Pump and  
Circuit.

# Mapua owes much to Bernard Wells

About the time the Coastal News goes to press, the Tasman District Council is likely to make a decision on a development plan for Aranui Park. David Mitchell tells the story of the Wells family, who donated the park.

A gift of 4ha (10 acres) of land for a new park in Mapua in 1977 was a considerable sacrifice for the family of Bernard Wells.

Bernard and his wife Dorothy had reached retirement after a lifetime of orcharding that proved to be never very prosperous. The orchard inherited by Bernard and his brother Stan had to support two families and their incomes and lifestyle were consequently always modest.

When the orchard was divided at retirement in 1975, their modest lifestyle continued because of the way the family decided to use their assets. Bernard and Dorothy with daughters Linley and Sandra decided to donate their valuable 4ha of lowland to the community as a reserve that would provide a pleasant and natural haven and become increasingly important as Mapua grew. After Bernard inquired and found that he could not stop a future council from changing the park's use and possibly subdividing it for housing, the family donated the area to the Government.

The gift was gratefully received by then Minister of Lands Venn Young who presented a certificate to the Wells family acknowledging "a generous contribution to the preservation of New Zealand's natural heritage". Ironically, only 12 years later in a government restructuring, the Lands and Survey Department was disestablished and Aranui Park was handed over to the very council that Bernard had earlier decided might not prove a reliable custodian.

The gift was consistent with Bernard's work on Mapua's Domain Board and Reserves Advisory Board for more than 40 years and his family's efforts for better reserves in the district. It was also part of a family tradition of such gifts. In Mapua, Bernard's father had donated the site for the Mapua Presbyterian Church (now part of the Hills Community Church), and in Taranaki, his grandfather, Zaccheus, had donated one portion of his land for a school, and another for a Methodist chapel.

Bernard came to Mapua in 1915 as an infant with three older brothers, Howard, Malcolm, and Stan after their parents, Arnold and Lizzie, quit their leased Taranaki dairy farm. The family later had a further addition, daughter Beatrice, or Trixie, who was born in 1918.

Arnold, then 42, had grown weary of the monotony and hardship of milking cows in Taranaki. He was son number six of 10 sons and inherited from his father



*Bernard & Dorothy Wells*

Zaccheus some distinctive traits, including a strong religious faith, a belief in hard work, meticulous record-keeping, a love of music and a thirst for learning that, in his case, led to an interest in astronomy, meteorology and botany.

Arnold bought 20 acres of land in Mapua, half flat swampy land, now Aranui Park, and half the lower slopes of the hill close to Seaton Valley Rd, partly planted in young apple trees. Arnold was to later optimistically name his orchard "Mt Hope", because on a clear day he could see distant Mt Taranaki from his veranda.

Arnold grazed milking cows on the flat part of his property and on the sloping ground he had to plant more trees to make a viable orchard. The family relied on their own vegetable garden and, as a hobby, Arnold planted native trees.

Within a year, Arnold was on the committee of the local Presbyterian Church, which also served Baptists and Methodists, and within four years the couple donated a section in Aranui Rd for a new church. The building, completed in 1928, later changed to become the Uniting Church and, subsequently, the Hills Community Church.

Both Arnold and Lizzie were lay preachers and Arnold used to walk as far as Dovedale and Upper Moutere and back to Mapua to lead Sunday services. He was also a long-serving member of the Domain Board and for recreation made occasional trips into the Mt Arthur area in search of ferns and native plants.

Arnold and Lizzie were music lovers and used to perform at Friday family musical evenings. It was a tradition carried on by their children, and Bernard on

*contd on next page:*

*The Wells family: contd*

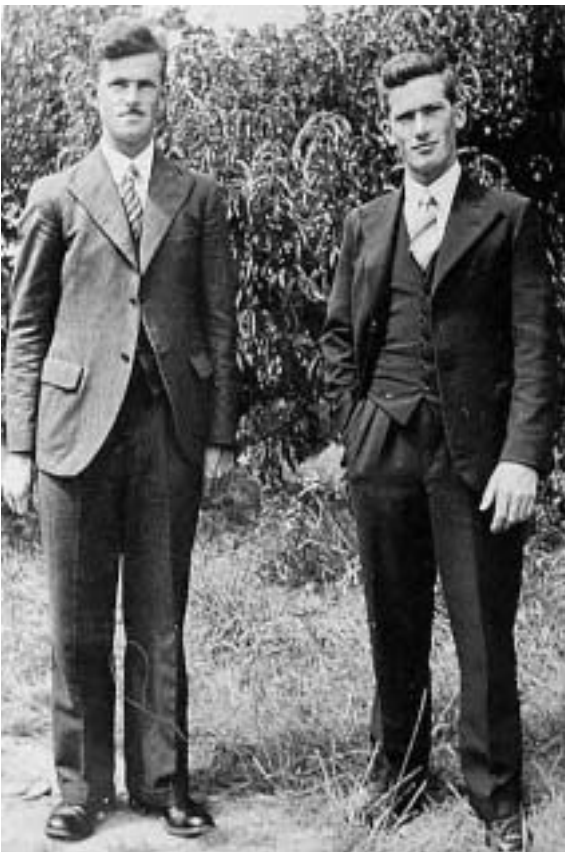
violin and Stan on cello would perform with others at similar family musical evenings for much of their lives.

Arnold and family seemed to have struck it lucky. The apple trade gained momentum during the 1920s, particularly with the development of the Mapua wharf. After a bumper season in 1929, Arnold persuaded his brother Decie and family to come south and to share the good fortunes of orcharding.

Unfortunately, their timing proved disastrous. In 1930, apple prices crashed as orcharding and the economy headed into the Great Depression. Arnold and Decie's families survived the hard times only by dint of the Wells' characteristics of faith and hard work.

During the 1930s, Bernard and his brothers became involved in a growing debate in the churches about war and pacifism. In 1935, a Christian Pacifist Society was formed and spirited national debate on the issue continued till after the outbreak of World War II. The Wells family, like many, was split on the question. When conscription was introduced in 1940, Bernard and Stan, as conscientious objectors, lodged appeals against the call-up. However, their brothers, Malcolm and Howard, were keen to serve and were subsequently active in the Home Guard.

Another person in Mapua caught up in the same debate was a young aspiring artist who worked on the Wells brothers' orchards on and off for nearly 20 years, the young Toss Woollaston. He had initially worked on



*Stan & Bernard Wells, partners in the family orchard*



*Lizzie & Arnold Wells at their Golden Wedding Anniversary*

the orchard for a season, fell in love with the area, and subsequently brought back his bride Edith to live in Mapua.

Toss had successfully applied for exemption from military training by writing a ringing declaration of his pacifist beliefs and he subsequently avoided conscription. Bernard and Stan were not so lucky, their appeals against service were disallowed although Stan was permitted to keep the orchard going, with only a modest income. Bernard, however, was one of 800 conscientious objectors who were punished harshly for their views. He was sentenced to three months' jail in Mt Crawford prison, followed by detention for the duration of the war in a remote prison camp near Hawera. His home was a small military hut and he was mainly occupied clearing scrub and flax.

One consolation was that he found time to read and he was also stimulated by the discussions with interesting fellow prisoners. Another consolation was that he was able to write to a young teacher from Picton he had met through church and musical activities, Dorothy Duffett. Bernard courted her by letter and later, when camp rules were relaxed, she was able to visit Bernard. After the war, they married and returned to Mapua where Bernard introduced his bride to orchard life. Dorothy, a good singer, also contributed to the Wells musical evenings. Like Bernard, she was involved in the community, including serving as a Playcentre supervisor and a long-serving volunteer librarian.

Like other conscientious objectors returning home after the war, Bernard and Stan were not accepted well by the community. It was many years before some would talk to them and at an anti-conscription rally in Nelson both were attacked and had their heads pushed into a toilet. However, many later came to value their

*contd on next page:*

contribution to the community and respected Bernard and Stan's actions.

After the war, Bernard became a strong supporter of the Campaign for Nuclear Disarmament and through the Nelson Action Committee on International Affairs, he was also involved in the anti-Vietnam war movement and opposition to the 1981 Springbok tour. In the 1970s, he joined a group that helped stop redevelopment of Mapua's Fruitgrowers' Chemical Company plant.

Bernard carried on the threads of community work initiated by his grandfather and father. He was a lay preacher at the church and also played the organ. He ran the Sunday School, served on the school committee and was also secretary-treasurer of the Progress League, a fore-runner of the community association. It was perhaps that role which encouraged him to begin publishing a monthly news-sheet, the *Mapua News*.

Bernard acted as reporter, editor, sometime typist, printer and distributor. In character, the *Mapua News* was very similar to today's *Coastal News* though, of course, only a fraction of the size, and it did not carry display advertisements.

In another final tribute to the district he loved, Bernard spent much of his retirement researching a history of Mapua, the *Fruits of Labour*, which he published in 1990. Its 400 pages meticulously record the development of the district

Bernard died on 27 February 1994 aged 78. He was survived by Dorothy and daughters, Sandra (Jacobs) and Linley (Eade) who, in recent months, have supported efforts to protect the family's original vision for the other major gift to Mapua, Aranui Park.

*The author gratefully acknowledges information from the Wells family history and from family*

## *Christmas in the Park*

### *Family Picnic Concert*

Aranui Park – Mapua

5.30pm Sunday 17<sup>th</sup> December

Gold Coin Donation

*Brought to you by: Hills Community Church  
Motueka Municipal Band, Community Association*

*Bring a picnic and enjoy a  
celebration of Christmas*

## The Lavender Room

I would like to introduce myself as I am starting a new practice at 69 Aranui Rd. My name is Lisa Polak, and along with my husband Lian and two children Emily-Mae (4) and Ben (3), we arrived in New Zealand on 25<sup>th</sup> May 2006. Shortly after, on our first visit to Mapua, we decided this was the place for us!



I studied and qualified in Sports/ Beauty and Holistic therapies in England, finally finishing in 1996, and have over the following 10 years, been developing those skills working alongside doctors and other health professionals, working as a therapist, lecturer and course leader.

My aim is to continue practising and developing here in Mapua, working along side local health professionals and therapists to promote health and wellbeing to all.

## The Lavender Room

Massage and Associated  
Therapies

*Lisa Polak*

*Fully qualified massage therapist*

69 Aranui Rd, Mapua

Tel:- 03 540 2863      Cell:- 027 378  
3832

Also working with:-

**RICHARD FRIEND**

*Registered Osteopath*

BSc (hons) ost, MOSNZ, ACC Provider

Tel: - 021 039 1647

**\* Second Time Lucky \***  
**You are INVITED to attend a F R E E EVENING with**  
**Celia Lashlie**  
**In the MAPUA HALL AT 7pm**  
**12<sup>th</sup> December 2006**

Adolescent Boys – they seem to disappear into another world where they barely communicate, and where fast cars, alcohol and drugs are constant temptation. Will they survive to become good men? How can Parent, Schools and Communities understand them and help them through this difficult and dangerous time?

Celia Lashlie has some answers. After years working in the prison service, Celia knows what can happen when boys make the wrong choices. Celia also knows what it is like to be a parent – she raised a son on her own and feared for his survival.

During the recent Good Man Project, Celia talked to 180 classes of boys throughout NZ and what she found was surprising, amusing and in some cases, frightening.

Celia has written two books: “The journey to Prison: who goes and why” and “He’ll Be OK: growing gorgeous boys into good men”.

Celia has been working with, and guiding the ‘Mapua – Working with Families’ group, since March 2006.

This evening will be funny, honest and no-nonsense, when Celia reveals what goes on inside the world of boys. It will offer clarity and insight to all who attend.

Second Time Lucky:- Unfortunately the planner October talk with Celia had to be postponed at the last minute due to Celia being stranded in Wellington because of bad weather.

We apologise for any inconvenience you may have experienced because of this.

This evening with  
**Celia Lashlie**  
has been organized by the  
**‘Mapua – Working with Families’**  
group, and is being sponsored by  
*‘Where the little things count’*  
MAPUA AUTO CENTRE

### **Providing Financial Solutions:**

- Family/Mortgage Protection
- Critical Illness
- Income Protection/Key Person
- Health Cover
- Business Insurance
- Retirement Planning/Investment
- Mortgage Finance

**STEVE LIDDICOAT (B.Com)**

Phone: (03) 526 6885 Mobile: 021 401 773

steve.liddicoat@ihug.co.nz Member: IFA, PAA.

## Coastal Garden Group

The club has had a busy couple of months with visits to many local gardens culminating in a coach trip to Diana, Jenny and Betty's gardens in East Takaka. Different garden styles have provided plenty of interest and many new cuttings, seed collections and new plant purchases. Our thanks to all those who have hosted our club – we have thoroughly enjoyed your gardens and look forward to seeing you again one day.

For our November meeting we drew on the experience of our members for a question-and-answer session, helping each other out with problems ranging from hungry citrus trees to how to deal with prickly weed in lawns. We were reminded how important it is to take appropriate precautions when taking diseased or problem plants into nurseries or garden centres for advice, by placing specimens in plastic bags. Many people are experimenting with some of the organic principles set out by Ruth, our October speaker, and we are encouraged by the results so far.

Once again the bloom, cluster and shrub competition saw a wide variety of plants with peonies, clematis, and the first of the roses making judging very difficult.

Afternoon tea was again followed by our plant auction which saw a record number of items for sale with some standard fuchsias causing a stir.

Our next meeting will be our Christmas meeting where we will take a picnic lunch to The Gardens of the World, after which we will take a short break. Wishing you all a Merry Christmas and happy holidays.

If you have any queries please feel free to contact either Barry Highsted (540-3139) or Anne-Marie Giddens (540-2335).

## Coastal Connections

On the 9th of November members met at Squires in Stoke, where once again we enjoyed prompt service and a great selection of dishes to satisfy all of us.

As it was such a wintery day, we decided not to view the roses at Broadgreen House. Instead, we elected to visit the Richmond Mall to do some Christmas shopping before going to Eyebright to make further purchases.

Our final luncheon meeting for this year will be on Thursday the 14th of December, when we will dine at Waimea Estates on the Appleby Highway, leaving Mapua at 11.30am. Please phone Dot on 540-2323 to book a place.

We would like to wish all readers a Very Happy Christmas and Good Health for 2007. New residents in Mapua are most welcome to join our group for any of our monthly luncheons and social times.

*Reported by Barbara Halse.*

## Police Update

Greetings to you all. I'm happy to be able to report that we have had success in finding one offender for breaking into the fire station last month. A 15-year-old who moved to Mapua from Nelson in June has been identified as one being involved and he has other matters before the youth court as well. As I write he is meant to be moving to a rural address closer to Motueka, so hopefully he will stay out of Mapua!

I have been contacted by a person who lives near the Mapua Domain recently. Apparently a group of youths (male and female) have been regularly drinking alcohol in the domain, but recently this has been starting to happen in the late afternoon during the week. This is of real concern to me. I will be trying to identify who these people are as parents need to know and action needs to be taken. With all the publicity about our binge-drinking culture this is how it starts.

We also need to be on the lookout for who is supplying the alcohol to these youths. This needs to be nipped in the bud.

A shame that there was another fatality on the coastal Highway between Tasman and Motueka. This is the 3rd in that area in the last 15 months.

### **Mapua Occurrences:**

22 October: 35-year-old Ruby Bay woman drink-driving in Motueka

31 October: Sudden death in Aranui Road. Not suspicious.

*Grant Heney, Rural Community Constable, Motueka.  
Ph: 528-1220*

# Garden Notes



Christmas is now upon us. The time to harvest the fruits of your labour, new potatoes, peas, beans, and more. All the goodies from your vege patch.

Keep replacing lettuce, as you will require them for salads at the barbies, when summer finally arrives. This month is not usually regarded as a big sowing time. Broccoli, cauli, cabbage, etc can be planted out. All quick-maturing crops to keep up supply are planted now.

In the flower garden, watch out for the arrival of black spot. This wet, warm weather we are experiencing makes for perfect attacks. Deficiency of potash in the soil is chiefly the cause of black spot.

This is generally a quiet spell, Holiday time, weeding is the top priority at the moment. Which brings me to wish all coastal news readers a very merry Christmas, and a safe New Year.

*Up-date on Aranui Park.*

A word from Council – There was only one meeting of the TDC committee. in November, and therefore unlikely that Aranui Park would be on the agenda, so would be held over until the New Year. The feeling is not to hurry. So be patient, all will be revealed in due course. Cheers.

*Barry Highsted.*

## Mahana Mowing Services

**Lifestyle blocks, olive groves, vineyards, large lawns and amenity areas.**

- Prompt service
- Great finish
- Competitive rates

*Phone Jack Wood – 543 2677*

## binGOSKIP HIRE

- Domestic & Commercial
- Short or long term hire
- Covered, open or lockable
- Garden & general waste
- Bin sizes to suit
- Prompt & friendly service

**Look for the big yellow bins**

03 528 0000 or 025 280 3002

## MAPUA VILLAGE MARKET

*Arts and Crafts plus other goodies.*

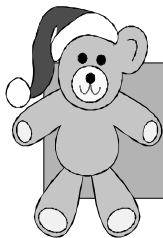
**Every Sunday, 10 to 3, by the Hall.**

*Starts December 10.*

*Free site for community groups.*

Expertly supervised by the Village Cat.

**Info and Site Bookings: 543 2602.**



## Mahana School Report

**K**ia ora! Educationalists are keen on jargon – we can always come up with a new word or phrase to enhance, or not, a fairly simple and straightforward idea. One keyword that has survived over the decade or so of Tomorrow's Schools is **Partnership**.

At Mahana School this is an integral part of our school ethos.

It begins with that most important parent/child/class relationship and the support we receive from parents is diverse. Parent helpers in the classroom, support for special events and activities, and sports day help as we saw on Saturday's Sports Day. This term the Mahana Senior Room is heading off to Christchurch for a week-long camp. This would not be possible without the help and support of our parents – menu-planning, transport, supervision and of course time and energy. We hope you all have a great time.

Our BOT is an important part of the partnership picture – working quietly, often behind the scenes to help maintain our school and ensure it is a safe and happy place to work at and learn in. We are grateful for the hard work of this team.

As we are part of a growing community our partnership bonds stretch out to our neighbours. Our newest neighbour, Woollaston Estates, has been a generous and wholehearted supporter of our school. We have benefited greatly from this partnership and we wish Philip and his team the best of luck for the opening of the new winery. Like all good partners we of course will be there!

So call it what you will – co-operation, sharing, supporting – at Mahana School we believe that family, school and community partnerships can only enhance the quality of learning and living together for everyone.

Ka kite.

## MAPUA Bowling Club

**S**unday 29 October was to be the day the Dale Vercoe Triples tournament was played, but the poor weather meant the tournament was postponed. The club championships have made a good start with the completion of the men's fours over the weekend of the 4th and 5th of November. The winning team was Don Sixtus, Arnie Ahnfeldt, Harry Jardine, and Toney McQuade.

The men's triples were played on the following weekend with a win to the team of Don Sixtus, Les McAlwee, and Graham Young. Alison Brett won the ladies junior and senior singles competition. The pairs championship is in the process of being played.

The Guthrie Bowron Triples were played on 8 November for the Enstone Trophy. The proceeds from this tournament went to the Blind Foundation. The results were:-

1st B.Hunt, J. Brewer, and J.Cole of the Riwaka Club, with 4 wins and 24 ends. 2nd G.Soper, and Mr & Mrs N.Harvey, from the Stoke Club with 3 wins and 24 ends. 3rd D.Sixtus, T McQuade, and M. Busby, from Mapua, with 3 wins and 21 ends.

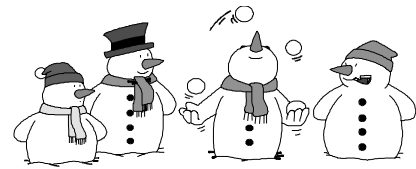
On Tuesday 14 November, the Mapua club hosted the women's fours competition, with the town playing the country clubs, for the Freeman Rosebowl. The competition involving 14 teams was to be two games of 21 ends. Unfortunately the bad weather took control of the event, and the second game went to only 13 ends. The final result was a win to the town with 265 points to the country's 196.

The next bowling competition will be the Fruit Fed. Triples to be held on 23 November. This is a social event involving the staff of the Fruit Federation.

On the second Thursday of the month the club has a BBQ and a social evening, using the petanque court. Social bowls afternoons are on Tuesdays, Thursdays, and Saturdays. Bowling starts at 1pm. Visitors and prospective new members are always welcome. Coaching is available every Thursday at 5pm for anyone wanting to learn the game or to improve their bowling, phone. Nancy at 540-2834 or Harry at 540-2441.

*David Higgs*

# Sam's Spam



## Issue 1

Hi, Whiz Kid Sam here. Welcome to the first issue of Sam's Spam! You may know from my adverts in the *Coastal News*' Noticeboard that I am very interested in computers and electronics, so my column is going to be about the latest technology products to hit the stores!

### **Nintendo Wii**

Top of my Christmas list is the Nintendo Wii, due to be released in New Zealand on 7 December 2006. It should retail for about \$499 NZD. It will be competing with Microsoft's XBOX™ 360 and Sony's Playstation™ 3, both of which are due out next year. Some of the new games due for release with the Wii are: The Legend of Zelda: Twilight Princess, Red Steel, and Rayman: Raving Rabbids.

### **Sony to sell world's lightest notebook**

According to reports, Sony is planning to start selling the world's lightest notebook/laptop computer in December in Japan, weighing 898 grams, which is just less than a bag of sugar! Sony's type "G" Vaio computer will be the lightest laptop PC that comes with a 12.1-inch liquid crystal display (LCD) screen.

### **Nokia N91**

This mobile phone/jukebox has room for up to 3000 of your favourite stereo tracks, and it has just been released in America (I'm not sure when it will reach NZ). It's a premium music device that snaps 2 megapixel photos and has WLAN features too. Connect right to your home stereo with a standard 3.5mm jack, so you can share your music with others. Plus, it's a fully functional phone!

### **Freebie of the Month:**

Windows® Defender is a free program from Microsoft that helps protect your computer against pop-ups, slow performance and security threats caused by spyware etc. You must have Windows XP on your computer to download this software.

To download, go to: <http://www.microsoft.com/downloads/search.aspx?displaylang=en> and click on the "Windows Defender" link.

A copy of this column and the Freebie of the Month link can be found on my website: <http://whizkid.awardspace.com/>

## Digital Photography Group

For the second month in a row the Mapua Digital Photography Group's planned "foreshore walk" from the Mapua wharf was postponed because of unsuitable weather and we met at Dot's place and had another session on making cards plus some socialising over a cup of tea or coffee.

Another attempt will be made to have a foreshore walk, with cameras at the ready, on 5 December, meeting at the Mapua wharf at 1.30pm, weather permitting. This will be followed by afternoon tea at Hamish's ice cream parlour.

If the weather is again unsuitable we will meet at Dot's. If unsure about the venue on the day, ring Dot at 540-2323 before 1pm.

*Edited by Andrew Earlam (advertising) 540-2845, Terry Smith (editorial) 540-3203, and compiled by Barbara Mercer, 540-3022. Views expressed are not necessarily those of the editors. We aim to have the newsletter out by the 1st of the month. Deadline for paper copy at the Mapua Store and e-mailed items (preferred) to [coastalnews@mapua.gen.nz](mailto:coastalnews@mapua.gen.nz) is the 20th of the month. Small ads are by gold coin donation in the collection boxes, club notices free. Printed by the Tasman District Council.*

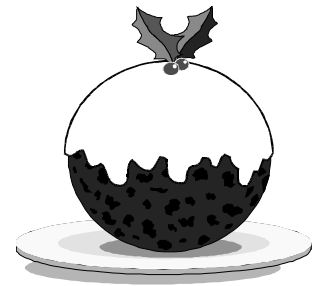
# Women's Recreation Group -

As the year draws to a close we can reflect on some wonderful walks and great coffees, as well as treasure new and long-standing friendships.

Our regular walk is still the coastline from Grossi Point to Ruby Bay that we walk once or twice a month. In between we have some favourite circuits that include a Mahana loop and the Pinehill Heights loop which ensures we keep some hill walking in our repertoire! We even ventured up the hill to the centre of New Zealand recently!

The year began with a team participating in Nelson's second Relay for Life and the decision by the group to

make this our designated charity. Our 'special' outings were to Bead Gallery, Gardens of the World and Neudorf Vineyard. Other highlights have come about by members volunteering to be 'guinea pig' clients for the NMIT Adventure Tourism students. These trips (Whispering Falls, Takaka Hill, and Nelson Lakes walks and rafting the Buller River) have been really enjoyable and we look forward to continuing our 'guinea pig' status next year when students practice taking sea kayaking trips!



Past and present members were invited to our second Melbourne Cup Night at Mapua Tavern and Judy hosted a great evening with nearly 30 in attendance – and everyone wearing a very smart hat! It was wonderful to see Jacqui, ex-Sport Tasman, who helped set up the group about five years ago, join us.

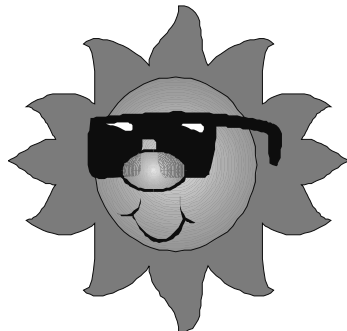
Next year we have two members organising horse riding for us, and we look forward to other exciting outings planned and organised by group members. If you wish to join us, or the group walking later and shorter more gentle walks, you are very welcome. See the Noticeboard for contact details

---

---

## Cancer Society Sun Umbrella Loan Scheme

The Cancer Society has available sun umbrellas on a loan scheme for community groups or functions during the summer months. If you require extra shade for your activity, please phone Sue on 540-2090 to organise collection of the umbrellas.



New Zealand has one of the highest incidences of skin cancer in the world. The best way to prevent melanoma and other skin cancers is to stop your skin being sun-tanned and sun-burned throughout your life. For more information visit [www.sunsmart.org.nz](http://www.sunsmart.org.nz)

*Sue Main.*

# Letters to the Editor...



## *By-Pass not forgotten*

What with sea walls (where, when and who pays what; the FCC site decontamination stops and starts; media DDT scares; and last but not least, Aranui Park to's & fro's (access road or not); progress on the Ruby Bay by-pass project has dropped off the front page, so to speak. However, while maybe out of sight, it is definitely not out of mind. At least not my mind. So, here is a brief progress report as of November 20 about the by-pass project as passed on to me by Andrew Adams, the Transit NZ project manager

Firstly, the good news is that Opus Consultants have been re-engaged as project design and detail engineers and are now picking up where they left off when the project was deleted by Transfund NZ two and a half years ago. This means that all of the previous engineering design and detail work can be re-used, updated and revised where necessary. All consents and land owner commitments can be reviewed and updated as well. This

process will take the better part of 12 months to be completed and the project to be at a "ready-to-go" status.

Secondly, the land acquisition process for the two remaining parcels of right-of-way land is proceeding as scheduled.

Thirdly, regular monthly progress meetings begin on November 22nd between all parties, ie, Transit NZ, Opus Consultants and others, which means you and I can keep up-to-date on how it's all going.

To sum it all up, the project is proceeding pretty much according to the schedule outlined by Transit last September. That is to say, a call for contract tenders early 2008, contract award and then actual construction beginning in the spring of 2008, with completion of the by-pass by autumn 2010.

I look forward to bringing you a further progress up-date early next year. Watch this space.

*Hugh Gordon*

## Community Association Report

**O**ur November meeting was a productive one; the sea wall is an ongoing topic. Some people felt that not enough had been done since our last public meeting in May 2004. But since then after a survey of over 930 ratepayers a rock wall was the best option chosen. Also each ratepayer voted to pay \$10 per year for the Tasman District Council to investigate a feasibility study to proceed with this option.

Recent erosion at the southern 150m of the Reserve has reduced the usable land to four metres wide in places. While the council's long-term objective is still to evaluate a long-term solution for Ruby Bay overall, there is an urgent need to reduce the immediate threat to the most vulnerable 150m of the Reserve's shoreline.

The council has engaged Tonkin & Taylor to prepare a preliminary design and construction methodology as the basis for consultation, and among other duties prepare and submit resource consent for the work to be undertaken.

Written approval from affected parties is expected to be sought in mid-December, and subject to sign-off from all parties, a resource consent application is expected to be submitted in early January, and a potential tender award in mid-March.

Our association is pleased with the progress and the interest the walkways group has taken in this matter, and we will work with the council and keep the public informed.

The siting of a basketball hoop and BMX track caused much discussion with various opinions. We will work with the council for the best place to place both these facilities for our youth to enjoy.

Tea/coffee will be served at our next meeting which will be the last one for the year. Please bring a plate. The first meeting next year will be on February 14th 2007. I hope you all enjoy a good Christmas and New Year.

*Jim Bryse, chairman.*

# Mapua Hall Society

The Mapua Hall is very busy coming up to Christmas, so users are encouraged to use the cleaning gear after their use. The idea of keeping the fees low requires users to do their part in cleaning after use. Even if you are only having a meeting, all those feet bring dust and grit into the hall and the next users may be on the floor doing exercises. So please use the dry orange dust mops after every use. Please wet-mop spills or food residues. Committee members in their monthly duties are there to assist, but not paid cleaners. Your help with this would be much appreciated.

There is a new booking book at Perry's Garage next door to the hall for 2007. Once again we thank Perrys and their staff for this community service. Bookings must be made through the booking book – no phone bookings. When making the booking please include contact details, especially an address for invoices, as this is the way we recover rental for hall use. Also as the use of the hall is high, please take care that booking times and dates are accurate, so we don't get overlapping of times or double bookings. Consideration for the next booked users is appreciated by all.

While we have had a better run with vandalism in the last few months, a large window was recently smashed with stones and cost \$265 to repair. That is equivalent to the income generated from a weekly user

group's rental for six months. Vandalism is a waste of the community's time and energy, so please do everything to help keep this behaviour out of our community.

The funding subcommittee is making progress on their large list of projects and we hope to see some rewards for their efforts in the coming months. There are some table tennis tables under the stage, which are unused at present. There was an active table tennis club some years ago and perhaps there is an opportunity for someone to revive the club and continue the table tennis evenings, which were well supported in previous years.

Users of the hall with long memories may recall the screening of films – the hall does have a projection room. There are a number of halls throughout the country where there has been a revival of local film screenings, as a way of utilising community halls. Perhaps there is an opportunity for the formation of a local film club to pursue this. Just a thought?

The Hall Committee wish to remind users that our monthly committee meetings are open to all and are held on the second Wednesday of the month at 7.30pm at the hall. If there are issues that need attention re the hall then we welcome the early resolution of those matters. Having said that our next monthly meeting is 14th February unless some urgent issues arise.

Lastly and most importantly, the committee wish everyone an enjoyable and social Christmas and New Year.

*Mike Shirer, Chairman, ph 540-2698*

# Hills Community Church

It's beginning to look a lot like Christmas... Well, for most folk around here I'm sure it is, but coming from the northern hemisphere it hardly looks or feels like Christmas to me. But then, how should Christmas feel? While I might be dreaming of a white Christmas in this green and verdant land, there will be many in our midst experiencing a blue Christmas.

A blue Christmas comes when there aren't enough resources to cover the basic necessities let alone put even the humblest of Christmas presents under a tree. A blue Christmas comes when loved ones are not with us because of distance (physical or emotional) or death. A blue Christmas comes when the pressures and worries of the world press in so hard we wonder if it's worth going on. Unfortunately, far more people experience a blue Christmas than a white or green one.

Perhaps the best gift you could give this year is to reach out to someone who's having a blue Christmas and offer them some real Christmas cheer—the knowledge that Jesus Christ is there for them—always, no matter what—and that He loves and cherishes them deeply. Maybe you could take a little time out from your own celebrations and extend the genuine love of Christ to someone who is depressed, lonely or overwhelmed by the pressures of life.

We don't really know if Jesus was born on a dark wintry night or a warm summer evening. But we do know that He was born and that His birth changed everything! God was (and is) in our midst. The true light that gives light to everyone has come into the world. May that true light of Christ shine—through you and through me!

*Christmas Blessings, Rev. Marilyn Loken*

*Come Celebrate the Christ at  
Hills Community Church*

**123 Aranui Road, Mapua**  
**Phone: 540 3848**



**December Services**

Sundays – 10:00am

Join us for a series of entertaining drama skits with a Christmas "twist"

Children's ministry during the service; morning tea after the service

**Carols in the Park (Aranui Park)**

Sunday, 17 December – 5:30pm

Sing along with the Motueka Municipal Band, listen to music provided by students from Mapua School and enjoy additional entertainment. Bring a picnic and a friend!

**Christmas Eve**

Morning Service – 10:00am

Candlelight Service with Carols & Readings – 9:00pm

**Christmas Day**

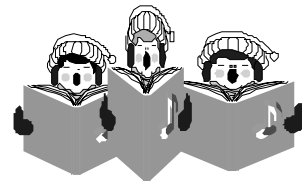
Communion Service – 9:15am

**31 December**

Christmas Carol Stories — 10:00am

**Services During January** – 10:00am

## *Christmas in the Park*



The Hills Community Church in Mapua and the Motueka Municipal Band are joining forces on Sunday 17th December to present a "Christmas in the Park" concert in Mapua's Aranui Park.

The event has come about through a combining of ideas. The church wanted to put on an evening of carols, readings and other Christmas items and asked the band to provide the music. The band had been planning to have a Christmas concert in an outdoor picnic environment. Both groups were planning their events for the same day, so it was not a difficult decision to bring the events together.

The venue of Aranui Park will allow plenty of space for families to spread out with their picnics and for children to run around and play in safety.

There will be a gold coin collection during the evening with the proceeds going to the Motueka Municipal Band, to assist with their travel costs to attend the West Coast Brass Bands Association contest in Greymouth next May.

*Authorised by Ian Nicholas, Motueka Municipal Band Conductor*

# Community HEALTH NEWS

---

## Mapua Health Centre

### Be Pro-active with your health

In days gone by nurses used to tell patients what to do. In these modern times of self-responsibility and open communication, our nurses are trained to listen to you and allow you to make informed decisions on how to improve your own health. This helps you to become the “expert” through education and support.

The government has recently made funding available for us to be more pro-active in doing this and we are offering three new schemes:

1. CAREPLUS - for people with high health needs.
2. HEALTHY LIFESTYLES - for motivated people who would like support to improve their health through exercise and modifying their diet.
3. SMOKING CESSATION - for people contemplating quitting and needing support (free consultation and followup)

We are already seeing big improvements in people's health after they have enrolled in these programmes.

We welcome your enquiries. Phone 540 2211, email [wndy@mapuahealth.com](mailto:wndy@mapuahealth.com) or call us into the practice and arrange to see a practice nurse.

### REMEMBER. Be Sunsmart!

Every day the sun is getting stronger and NOW is the time to be smart with our skin health.

**SLIP** into a shirt - and **SLIP** into some shade, between 11am and 4 pm when the ultraviolet rays are most fierce.

**SLOP** on some sunscreen before going outdoors.

**SLAP** on a hat with a brim or a cap with flaps.

**WRAP** on a pair of sunglasses.

*Please send us your ideas and suggestions.*

### Slim Pickings

**We are getting 1KG heavier each year on average. Can YOU afford to weigh 10kg MORE in 10 years?**

By just walking briskly for about 15 minutes and cutting out just 100 calories a day...you are making a huge step to maintaining your weight.

Here are some other easy ways to keep your weight down.

- Don't have butter on your sandwiches.
- If you have two tablespoons of cream cheese a day, swap it for low fat.
- Two slices of toast for breakfast? Make it brown and use sandwich thickness.
- Eat low-fat yoghurt: one pottle of the skinny stuff is all you need to save.
- Take up knitting: at 85 calories an hour, by the time you've watched the news and one other program you're in credit.
- Go for vinaigrettes rather than mayonnaise dressings: two tablespoons and you have saved 100 calories.
- Choose healthier biscuits: swap two Tim Tams for two Ginger Nuts.
- If you drink your coffee with whole milk, you can save 100 calories a day by drinking three cups with skim milk instead.
- Take the stairs, but more than once: a minute a stair climbing will burn about 15 calories.

### Food for Thought

*“All truly wise thoughts have been thought already thousands of times; but to make them truly ours, we must think them over again honestly, till they take root in our personal experience.” - Johann Wolfgang von Goethe*

### Your Community Health Centre

*The Mapua Health Centre is your community Health Centre should you need medical attention.*

**Location:** 62 Aranui Road.

**Hours:** 8:00 - 5:30 Monday through Friday

**Phone:** 540-2211 (for 24 hour cover)

# Property News

According to a recent survey conducted by the ASB Bank, more people believe that house prices will continue to rise and that now is a good time to buy a home. Confidence in housing or a “faith in bricks and mortar” has improved, despite higher interest rates and economic fundamentals that suggest otherwise. Buyers felt they had more time to consider buying a home because the upward price pressure had diminished.



Some current sales are:-

6 Sept	Langford Dr 3 B/R House	761m2	\$383,000
30 Sept	Kina Beach Rd 2 B/R House	774m2	\$470,000
31 Oct	Stafford Dr 3 B/R House	809m2	\$295,000
31 Oct	Iwa St 3 B/R House	542m2	\$440,000
8 Aug	Dawsons Rd LSB	2 ha	\$455,000
28 August	Chaytor Rd LSB	1 ha	\$160,000
6 Oct	Dominion Rd LSB	5 ha	\$580,000

Compiled by Grahame William, Ray White Real Estate  
MREINZ

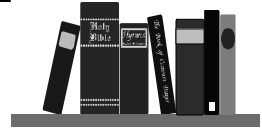
# Rose Society

Our group met on 6th November for our first Table Show of the new Rose season – what a joy it is to see those first beautiful blooms. A lovely display in all classes – H.T., Miniatures and Old Fashion types and good, friendly competition.

Our group has two national judges and instruction was given on preparation and conditioning for displaying at rose shows. The Champion Bloom was displayed by N & L Thawley with “True Love”. The Champion Miniature was displayed by Margaret Sinclair with “Minnie Pearl”

*Letty Thawley, Secretary*

# RSA MEMORIAL LIBRARY



## Temporary membership

The library is a fully independent community owned library, supported by a team of dedicated volunteers and funded by grants from charitable organisations and local fund-raising activities.

Mapua gains many visitors over the holiday season, and through seasonal work in the horticulture industry. At any time of the year the library welcomes applications for temporary membership. Our philosophy is one of free access to all.

Enrolling as a temporary member involves a few simple registration details being provided at the desk when borrowing your first lot of books.

What we need to know:

- Phone number and postal address of your temporary, or holiday accommodation
- Date you intend leaving the district
- Your home address, phone number and email
- An alternative contact (someone who knows you at your home address). Name, phone number and email (if known)

That's it! It's very easy to join, and we have a great selection of fiction and non-fiction books available. There are separate sections of children's and young adult books, also reference and large print. We have a magazine section and books for sale.

*Christmas stories and poems for the children will be read by Patsy at the library from 3pm to 4pm on Saturday December 23.*

### Library Hours:

Tuesday, Friday & Saturday 2pm – 4.30pm  
Wednesday 5pm – 7.00pm  
Thursday 10am – 12.30pm

### Christmas hours

Closed Dec 25 & 26, and closed Jan 1, otherwise open on the usual days and times

# RUBY BAY THE SETTING FOR NEW COMMERCIAL VENTURE

Exciting new concept store comes to the Bay soon to open among the shops up Ruby Bay's CBD is Ruby Recycles. It's no ordinary second-hand shop, rather a recycling and consignment store and gallery, stocked with all sorts of vintage and current treasures that will appeal to anyone with an eye for the stylish and unusual. The shop will cater for collectors of last century's objects as well as for fashion shoppers looking for something eye-catching.

What goes around comes around, and the items on display and for sale at Ruby Recycles have been sourced over years of collecting. An impressive consignment of original Art Deco china and furniture, for example, is being sold courtesy of a Marlborough collector. Other items have spent decades being lovingly looked after in local homes. Some will be objects bought on the spur of the moment.

At the modern end of the stockroom spectrum will be the clothes, jewellery and accessories. The garments on the racks here will all be quality designer goods in excellent condition, and most of the shoes will be imports.

Ruby Recycles, at 172 Stafford Drive, will also sell goods on consignment. Phone to discuss, on 03-540 3939, or drop by the store. Opening day is Friday 15 December, and RR will then be open on Fridays, Saturdays and Sundays.

## Postal Delivery

We can post you the Coastal News. To take advantage of this post \$10 with your name and address to Coastal News, PO Box 19, Mapua Store, 7048. Include your new postal code for rapid delivery. Existing subscribers can also send their new code in by email [coastalnews@mapua.gen.nz](mailto:coastalnews@mapua.gen.nz) or by post.

e âuç e xvçvÄxá

Yesterday's treasures & today's style

Furniture ? China ? Bric a brac ? Designer clothing & shoes ? Jewellery ? Collectables & curiosities ? Art deco ? 1950s & 60s vintage wares ? Art ? CDs ? Books

*Open Friday to Sunday  
from 10am to 5pm (from 15 Dec)*

**172 Stafford Drive, Ruby Bay**  
E: [rubyr@rubybay.co.nz](mailto:rubyr@rubybay.co.nz) Ph: 03-540 3939

## Ruby Bay Store

Fresh food & drinks, hot & cold  
— eat in or take out

Groceries & dairy Fresh fruit & veges  
News & magazines Fishing bait  
And NINETEEN ice-cream flavours!

*Open all day every day, 7am to 7pm  
(with extended hours over the holiday season)*

**174 Stafford Drive, Ruby Bay**  
Phone 03-540 2788

## The Flying Fish

Gourmet takeaways, cooked while you wait

Tempura-battered fish & chips  
Curries ? Pizzas ? Pastas

And much, much more — look out for specials  
**172 Stafford Drive, Ruby Bay 03-540 2062**

*Open Tues-Sat 4.30pm to 8.30pm  
(with extended hours during the holiday season)*

## On The Beach

holiday apartments

Fully furnished, one bedroom or two,  
set in half a hectare of grounds  
just metres from high tide mark

**On The Beach, 170 Stafford Drive, Ruby Bay**

## Ruby Bay Roast

Coffee beans (Brazilian, Kenyan &  
Columbian blend) roasted to order  
\$13 for 300g

170 Stafford Drive, Ruby Bay 7005  
Email: [coffee@rubybay.co.nz](mailto:coffee@rubybay.co.nz)  
Phone: 03-540 3939

# PROBUS CLUB OF MAPUA & DISTRICT

The club's meeting on the 3rd of November was well attended to listen to two very good speakers, both with interesting subjects, one being experience with the London Metropolitan Police, and the other the development of a vacuum pump..

John Trotter was born in Waipukurau, south of Hastings, but he was educated in Christchurch. He had three years experience in the army before migrating to Britain to a very cold winter in 1962. John applied to be a constable with the Metropolitan Police. The day he turned up for an interview he found there were around 100 applicants. As the day progressed, going through various interviews and tests, he was pleased to be one of 13 applicants that were accepted. The next requirement was a medical test at St Thomas's Hospital. From there it was 13 weeks of training at the Hendon Police Training School.

John's first assignment was being the "Bobby on the Beat" around the Albany Street area, north of Euston Road. This was around 1968 at the time of major demonstrations in London, including Vietnam and the race problems associated with the Springbok rugby tour. John found those first two years hard going on the beat, having to deal with an anti-social community. He was later able to transfer to a motorcycle division, first training on the Velocette scooters known as the "Noddy Course". When he completed the training the scooters were made redundant. John continued with another five days training on the conventional motor bikes, before going back on duty.

John spoke of a variety of experiences of being a part of a motor cycle escort around the London area.. One incident was escorting two big trucks carrying two large Watney Brewery vats on a very hot Sunday morning to Tooting Broadway. They had to drive through some narrow streets. At a tight corner the first experienced driver negotiated the corner, but the second driver wasn't so fortunate, getting his truck jammed, blocking the road for several hours. During his wait a woman from the local pub came out with a tray of best bitter beer to

hand round to the police escort. John said it was the best glass of beer he had ever tasted.

John completed his time with the Metropolitan Police in 1998, and looks back on an interesting and varied 30 years.

Norma McCulloch spoke about her career on the development and marketing of a hand-operated vacuum pump. She showed the advantages of a practical way of extracting air from plastic bags of food to be stored in the freezer. The food will maintain maximum freshness and colour when cooked. Her first pump was made of cardboard in 1967 at a cost of \$10 for the first production of 1000 units. Within five years Norma had the pumps manufactured in plastic. She reached a sale of over 60,000 pumps in one year.

Norma was able to acquire patent rights to establish a world- wide marketing and development of her vacuum pumps. Her son Richard was once confronted by a woman that had collapsed in the street. He applied mouth-to-mouth resuscitation for about 15 minutes before an ambulance arrived. This event gave Norma the idea to design and have produced the Life Resuscitator Pump, for which a special plastic mouthpiece had to be developed and manufactured in the USA. The resuscitator is sold in New Zealand through the St John Ambulance.

From the development of the resuscitator Norma could see a need to modify a unit that could be used on newborn lambs and calves with respiratory problems. Trials were held at Massey University and on completion of the trials 1000 units were sold at the Mystery Creek Agricultural Show.

Norma completed her talk by distributing her Woman's Weekly article, "A Mother of Invention."

On the 15th of November the club held its annual BBQ at the Eves Valley reserve and members enjoyed a pleasant afternoon. After lunch most of the members enjoyed a stroll through the beautiful bush reserve listening to the call of native birds.

*David Higgs*

# LIFE IS PURRR...FECTION

**M**iaow...Tiger Lily here again. Summer is on its way so this will be the last letter from me till after Christmas. I am looking forward to some yummy treats over summer and where best to hang out but at Flavour! I hope I get some nice pressies – you know my address!



Here at Flavour they are gearing up for what is expected to be a busy summer season. If you want to have drinks or a meal with your friends or workmates give them a ring. It's a great place for groups. Dine and Dance is a great night to be here. The next one, I overheard, is on Saturday 9th December with that lovely Warren Fenemore. Resonance is playing in the Restaurant on 2nd December and some guy called ELVIS is coming back for the fourth time – since he's so good. Look for Elvis on New Year's Eve!

Brian and Angela will be arranging Christmas Carols as they do every year so remember this is a special family night with Santa – I will be there! Lots of work is being done to organise some great nights over the New Year period so drop in and pick up an entertainment guide from Flavour. It's going to be busy, the only thing is I have to be so careful crossing the road with all the visitors and locals buzzing around – please watch out for me, I think I have used up quite a few of my lives.

I listened in the other day when I heard FOOD mentioned and found out there is a new menu which includes some more vegetarian and gluten-free options whatever that means – who cares as long as there is some for me. Apparently if you are particular about your diet – Flavour will look after you – GET AWAY!

Lunch at Flavour during the week has started again so come along with your neighbours and enjoy the ambience of Mapua's oldest and original restaurant – I chose it – so it must be great.

*Bye... Tiger Lily, Village Cat*

Sourced: MTA campaign material

## Motoring with Mapua Auto Centre

(next to Mapua School) Sept 2006

### How prepared are you for -Summer Holiday Motoring-

By the time you read this article it will only be roughly 20 more sleeps until Christmas.

As well as preparing yourself for the festive season with regard food & beverage provisions, gifts, sun, beach, water, BBQ's, contacting friends from away, and that long awaited break, have you given any thought to your vehicle? What precautions you can take to help minimize the risk of you experiencing vehicle troubles when you want them the least?

The precautionary steps we recommend you take, is to have your Automotive Technician check the following items to ensure they are in good condition.

- **Full Service.** When will it fall due? Would you like to have it done prior to your holiday or can it wait? Do any accessories items (belts, hoses, brake pads, air filter, fuel filter etc) require replacing to avoid mechanical breakdown. We recommend a **Full Service** is undertaken at least every 10,000km.
- **W.O.F. (Warrant of Fitness)** When is it due?
- **Coolant Inhibitor Levels.** What is the condition of your coolant? Coolant or antifreeze (as it is commonly known), has three protective qualities. Anti-freeze protects the coolant in your engine from freezing; boiling and corroding. We recommend **Coolant** is replaced at least every 12 months.
- **Brakefluid.** Is it in good condition? Brakefluid is hydroscopic (absorbs water) which not only reduces the braking efficiency of your vehicle, it also allows internal corrosion to occur within the brake system. **Brakefluid** should be replaced at least every 12 months. This is especially important if you intend loading your vehicle up &/or for towing a trailer. Boat, caravan etc.
- **Tyres/Wheel Alignment.** Do your tyres have a good tread depth for good road grip keeping you safe? Are your tyres wearing evenly, avoiding a blow out as well as gaining the best value for money from your tyres? Good tyre condition is also important for a full load &/or towing.
- **Automatic Transmission.** When was the last time you had the fluid changed in your vehicles Automatic Transmission Gearbox? We recommend this be done every 60,000km or 40,000 if towing.
- **Shock Absorbers.** Are they working effectively? Worn shock absorbers can add at least 2mtrs to your stopping distance. Are the shock absorbers in your vehicle strong enough to take the extra weight (not bottom out) and still be able to hold your vehicle firm (no side to side body roll) on the road.  
Also important when vehicle is loaded &/or towing.

**We wish you all a very Merry Xmas, a Happy New Year, Safe motoring over the holiday season and a Prosperous Year in 2007.**

**Regards: The team at Mapua Auto Centre**

# Noticeboard

**Mapua Friendship Club** will meet for our Christmas lunch at the Post Office Hotel, Motueka on Thursday December 21st. Friends will start gathering at 11:30am for a social drink and lunch will be served at 12 noon. After we will return to the Mapua Hall to work off our lunches with a game of indoor bowls. All are welcome. Lunch cost is \$12:50. Phone Valerie Roche, 540-3685, for more information.

**Babysitter Available.** Friendly, responsible 16 year old available for evening babysitting. Also daytime babysitting over the December-January period. Morgan Loveridge Ph 540-2472

**Vanessa** wishes to advise her clients she is no longer at Hair in Mapua from 15<sup>th</sup> November. She can be contacted on 03 528 5154 or 027 408 6970. Thank you all!

**Mapua Hills Rose Society** (est 1949) meet 1<sup>st</sup> Monday each month (except January, June and July) at the Supper Room, Mapua Hall 7.45pm. Rose lovers, and growers, visitors and guests very welcome. Enquiries to Secr: Letty Thawley, 540 2876, Pres: Margaret Sinclair 03 528 8477.

**Cancer Society Sun Umbrella Loan Scheme:** available for community groups or functions during the summer months. If you require extra shade for your activity, please phone Sue Main, 540 2090, to organise collection of the umbrellas. NZ has one of the highest incidences of skin cancer in the world. The best way to prevent melanoma and other skin cancers is to stop your skin being sun tanned and sun burned throughout your life. For more information visit [www.sunsmart.org.nz](http://www.sunsmart.org.nz)

**Digital Photography Group:** Anyone with an interest in anything to do with digital photography/digital imaging is welcome to join our expanding group. Meetings first Tuesday of the month at 1.15pm. Phone Dot Siddle for more info, 540 2323

**Mapua Combined Probus Club** meets first Friday of the month at 1.30 in the supper room of Mapua Hall. All retirees most welcome. If interested please ring Pres. Athol Churchman 540 3450, Secr. Maureen Fon 540 3292.

**Kidz n' Koffee Playgroup** every Wednesday (in school term) 10am to 12 noon. The age group is newborn to five years. All parents and caregivers are welcome to attend, there is no cost. Morning tea is provided for you and your children, a donation is appreciated. The playgroup meets at Hills Community Church, Mapua. Come and relax and meet some new neighbours. Enquiries to Sara Pumphrey 540-3889, and Sharon De Jong 543-2486.

**Need Help?** Can't connect your DVD / Video player/ Lost your computer work? Can't download your digital photos? Need help setting up an email account? Average job price only \$10! Basic web design, average price \$25/page, including advice on domain registration. Call **Whiz-kid Sam!** 5266-066. sambobuk@hotmail.com - <http://whizkid.awardspace.com/>

**Photocopying** at Mapua Auto Centre, 7 Warren Place, during office hours.

**Mapua Genealogy Computer Discussion Group:** Our Next **bimonthly** meeting will be 1.30pm on Saturday **2nd December**, at 46 Aranui Road, Mapua. For information about this group phone Val 540 3931 or Peter 540 2686

**Mapua Women's Walking Group:** Operating two social, friendly groups - both leaving from outside The Naked Bun on Thursday mornings. The early group leaves at 9.15 and walks for at least 1½ hours before meeting the later group for coffee. Ring Rose 5403600. Later group leaves at 10am - Ring Val 5403931. New members very welcome.

**Meditation for beginners** meets Wednesdays fortnightly at 7.30pm at the Aranui Centre, 69 Aranui Road, Mapua. Next meetings 5 & 19 December. All welcome. Gold coin. Please tel Julie Ewer, 5402705 to register or email [julie@inhealth.co.nz](mailto:julie@inhealth.co.nz)

**Women's Move n Groove** Dance Classes continue at the Mapua Public Hall, Mondays 11am-noon. Short low impact funky routines aimed at increasing mind/body co-ordination, balance, strength, flexibility, poise and grace. Gain confidence while having fun. All welcome. Call Catherine Callaghan, at Dance Moves, 548-8046 or 027 323 2098.

**Spinners, Knitters, Weavers** - Mapua Wool Gatherers meet at the Mapua Hall on the second Tuesday of each month at 10 a.m. All welcome.

**Yoga with Robin** in the Mapua Supper hall. Classes will be held Wednesdays at 4:30 to 6:00 p.m. during the school term.

For more information contact Robin at 540-2113