

Mapua and  
Ruby Bay

# Coastal News

Email: [coastalnews@mapua.gen.nz](mailto:coastalnews@mapua.gen.nz)

## Anzac Day—a Special Service

This year's Anzac Day was special for a number of reasons. First, 2014 is the one-hundredth anniversary of the start of World War One and second, April 25 2014 was the 99th anniversary of the landings at Anzac Cove on the Gallipoli Peninsula.

To mark these historical events and to remember the sacrifice made by New Zealand and Australian Service personnel in World War One, our local Moutere Hills branch of the RSA embarked upon an expanded parade at Mapua leading up to the service. This included the presence six horses with mounted lancers and a replica WWI armoured scout car.

More than 100,000 young New Zealanders served overseas in the First World War and some 18,000 lost their lives with another 50,000 horribly wounded; this from a country of only one million. New Zealand sent more personnel to fight in the First World War, per head of population, than any other nation.

Their sacrifice was humbly recognised throughout the service.

In spite of somewhat dubious weather more than 400 locals and visitors attended the Mapua commemoration, with another 150 attending at the Tasman and Upper Moutere services. The Moutere Hills RSA is very grateful for your continued support and recognition of the sacrifice of those who went to war.

We do have a number of people and organisations to thank and we take this opportunity to mention them. So many people contributed in some way to this year's Anzac Day commemorations across all of the three services in the Moutere Hills and we apologise if we miss anyone out.

Greg Olsen (Sir Greg) assisted with the organisation of the events and was responsible for making the WWI uniforms, the horse saddle blankets and many other props, including the display in the Mapua Library. This was a massive voluntary contribution. Thank you Greg.

Tracy Heaven organised the "volunteer mounted lancers" horse display at Mapua, and as a result of many practice sessions ensured that the other riders, Anna, Fiona, Arthur, Cordelia and Amy (and their horses) knew their roles on the day. Thank you all for your special contribution to the parade.

A few weeks prior to Anzac Day Tracy, Cordelia and Julian, dressed in period uniforms as WWI dispatch riders and cadet, visited Mapua, Upper Moutere, Mahana and Tasman schools with their horse to collect the commemorative documents which all of the school children had signed in remembrance of the Anzacs and this significant

year. These documents were placed in a special satchel (made by Greg Olsen) on the memorial on Anzac Day and will later be placed in the Moutere Hills RSA Memorial Library in Mapua for posterity. Again, this was no small contribution from all those involved.

We would also like to thank the four school principals, Neil Chalmers, Justin Neal, Grant Watson and Pip Wells, their staff and pupils who supported and contributed in many ways over the weeks leading up to Anzac Day and during the three local services. We could not carry off such an occasion without them.

We acknowledge the contribution of the Celtic Pipe Band and its members in their leading of the parade, and also the solo pipers who added a special atmosphere to the ceremony. We also thank Philip Taylor from the Motueka District Brass for his very professional and skilled bugling.

At Mapua we were significantly supported by two local scout groups who under the guidance of their leaders delivered chairs from the hall, set up at the memorial site and then returned the chairs to the hall at the conclusion of the service. Seating for many community members would not be possible without the scouts' efforts. We also thank the scouts who assisted with the flag-lowering and raising.

We acknowledge the contribution made by the Reverends John Sherlock and Marilyn Loken to the Mapua and Tasman services and Pastor Chris Janetzki, for conducting the service at Upper Moutere. We also thank Squadron Leader Mark Gasson for his address at both Mapua and Tasman and Hon Damien O'Connor for speaking at the Upper Moutere service. Thank you also to Peter O'Halloran for his stirring poem which he read at the Mapua service and a special thanks to the local school pupils for their readings.

The Army Cadets lead by Caleb Wolfreys from Motueka again turned out to parade with the veterans, as did the Mapua Firemen and St John members.

Nelson Batt dressed in WWI Army uniform (made by Greg Olsen) stood at attention with reversed rifle throughout the service as Honour Guard at the Mapua Memorial site.

Thank you to Roger Humphries and his crew for bringing along their armoured car, a great replica and unique attraction on the day.

Yet again the Mapua Hall Society provided the local hall and chairs for the use by the RSA and visitors at no charge. Very much appreciated ladies and gents.

A number of ladies under the guidance of Jenny Ralfe spent several hours arranging and serving morning tea for



people attending the service. We thank them and also those in the community who provided one or more plates of food for the morning tea at Mapua.

Of course, an event of this type cannot happen without the presence of the police and fire service who brought order to streets and ensured the smooth running of the road traffic while the parade and service was being held.

We also thank the Tasman District Council which has contributed financially to the Anzac Day service over the last few years and this year made a significantly increased contribution of \$450 in support of the expanded parade.

Finally, but not least, we would like to say again, thank you to all of the local people and visitors for sup-

porting "Poppy Day" and for turning out at the Mapua, Tasman and Upper Moutere Anzac services to remember those young people who have served their country and made the ultimate sacrifice.

*John Sharman*

*If anyone has photographs of the Anzac parade or memorial services that they would like to share could they please email them to John Sharman (Secretary) at joyand-john@kinect.co.nz. The Moutere Hills RSA will ensure the photos are printed and placed in the library at Mapua along with the school children's names for posterity.*



The Celtic Pipe Band leads the Anzac Day parade at Mapua

I went to the bookstore and asked the saleswoman, "Where is the self-help section?" She said if she told me it would defeat the purpose.

One nice thing about egotists, they don't talk about other people.

## Richard Ewbank

### *Garden & Property Maintenance*

- Handyman jobs - inside and out
- Chainsaw work
- Spraying
- Hedge trimming
- Water blasting
- Chipper available
- Green waste removal
- Raised garden beds
- Dry stone walling

Phone Mapua (03) 540 3881

Mobile 027 540 3881

## smythes LAWYERS

Property  
Subdivision  
Trusts  
Wills & Estates  
Powers of Attorney  
Business  
Relationship Property



Emma Marshall

Ron Thomson

300 Trafalgar Street, Nelson. Tel 03 546 8750

Home visit or other venue appointments by arrangement

[www.smytheslaw.co.nz](http://www.smytheslaw.co.nz)



## ASTRO

ENVIRONMENTAL LTD

- ▶ Septic Tanks
- ▶ Grease Traps
- ▶ Farm Ponds
- ▶ Winery Waste
- ▶ Bulk Liquid Waste Transport
- ▶ Submersible Pumps

Ph 0800 2 FLUSH (35874) 24hrs

info@astroenvironmental.com ▶ [www.astroenvironmental.com](http://www.astroenvironmental.com)

# An Ode to Mapua

The streets of Mapua are clean and tidy and safe, and I love them. There are footpaths, roads, signs, safety considerations, shops, a library, parks, health facilities and I love them. There are curbs, channels, gutters and drains and I love them. There are bicycles, pushchairs, wheelchairs, scooters, motorbikes and cars of all makes and ages, and I love them.

There are people who greet you as you pass, people who smile. Children and teens safely intent on their pursuits and elders pursuing contented pastimes. Literate and informed and kind people and I love them.

Framing this are gorgeous gardens, garden art, and houses. Houses of character, houses of beauty, houses with stories of the past and future and I love them. Then the gallery which surrounds this all is stunning. A gallery of a sublimely divine estuary and superb Tasman Bay. The birds, the fish, the trees, and the grasses and the grapevines and orchards, I love them.

Then there are there is the beautiful cloak of plains, hills, rivers and mountains. The produce of fruit, vegetables, wines, timber, art, seafood and more. I love them.

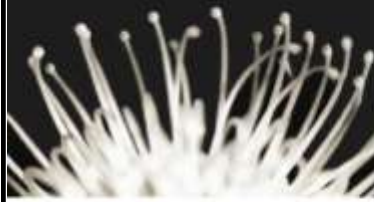
Electricity, broadband, reticulated water and sewerage, fire and health services infrastructure, decades of industrious management of resources, they are all there for the region and for Mapua. I love them. Mapua I love you.

Life brings problems and pain to all but in a place such as this, a place bursting with joy and health, with so much CREATIVE VIGOUR, gilded with sunshine, the sap must rise in everyone and paradise is regained.

*(By Su Smith, who with her husband Ken has spent five years in Papua New Guinea and is now living in Mapua).*



## Midwinter Charity Ball



Saturday 14 June 2014

7.30pm til midnight

The Playhouse Café

171 Westdale Road

Tickets cost \$60 each, or \$65 if you catch the bus from Mapua

Tables of 8 with allocated seating

Cocktail / Evening Dress

Your ticket includes. Welcome drink on arrival

3 courses of platters brought to your table throughout the evening

Cash bar

For ticket sales please phone 540 3305 or

email [midwintercharityball@gmail.com](mailto:midwintercharityball@gmail.com)

Proceeds will be donated to  Mapua School

## Work This One Out

A lawyer and a senior citizen are sitting next to each other on a long flight. The lawyer is thinking that seniors are so dumb that he could put one over on them easily.

So, the lawyer asks if the senior would like to play a fun game.

The senior is tired and just wants to take a nap, so he politely declines and tries to catch a few winks.

The lawyer persists, saying that the game is a lot of fun. "I ask you a question, and if you don't know the answer, you pay me only \$5. Then you ask me one, and if I don't know the answer, I will pay you \$500," he says.

This catches the senior's attention and, to keep the lawyer quiet, he agrees to play the game.

The lawyer asks the first question, "What's the distance from the Earth to the Moon?"

The senior doesn't say a word, but reaches into his pocket, pulls out a five-dollar bill, and hands it to the lawyer.

Now, it's the senior's turn. He asks the lawyer, "What goes up a hill with three legs, and come down with four?"

The lawyer uses his laptop to search all references he could find on the Net. He sends emails to all the smart friends he knows; all to no avail. After an hour of searching, he finally gives up.

He wakes the senior and hands him \$500. The senior pockets the \$500 and goes back to sleep.

The lawyer is now going nuts not knowing the answer. He wakes the senior up and asks, "Well, so what goes up a hill with three legs and comes down with four?"

The senior reaches into his pocket, hands the lawyer \$5, and goes back to sleep.





### cleaning domestic & commercial

- Interior and exterior
- Pre/post rental cleans
- House washing
- Window cleaning
- Waterblasting
- Roof and gutter cleaning/repairs
- Mould and fungal removal
- Waterproofing / leak repairs
- Joint resealing
- Tile refixing
- Painting and touchups
- Earthquake proofing

### ground maintenance

- Lawnmowing
- Brush-cutting
- Yard cleaning
- Rubbish removal
- Hedge trimming
- Tree lopping and removal
- Fence painting
- Chainsaw work
- Garden and fertilising
- Garden edging concrete / wooden
- Fence construction
- Concreting and path repairs
- Deck building

### domestic irrigation

- Free irrigation needs assessment
- Design and installation

### car grooming & valet service

**professional service • reasonable rates**  
work guaranteed • local for 19 years • reference available  
**contact**

**Elwin & Karen Cadman**

**P** 03 528 0918 **M** 027 375 2941

**E** enquiries@ecservicesmotueka.co.nz

www.ecservicesmotueka.co.nz

no job too small!

If the police arrest a mime, do they tell him he has the right to remain silent?

How is it possible to have a civil war?

Whose cruel idea was it for the word "lisp" to have an "s" in it?

## Endurance Spraying Ltd

**Pete Hughes** Owner/Operator

**Ph (03) 544 2654**

**Cell 0211 942 654**

- All types of weed spraying
- Hill country gorse a specialty
- Commercial & Residential
- Lawn Spraying & Fertilising
- 20 years experience - Growsafe certified



## Anthroposophic Nursing Therapies

**Adrienne Henry**

RGON, ANANZ.

155 High Street Motueka

**021 0279 6408**

or visit my website

[www.warmhandswarmheart.co.nz](http://www.warmhandswarmheart.co.nz)

Are you needing support through chronic illness, emotional stress, fatigue or burnout?

Anthroposophic Therapies may help restore your energy and wellbeing, improving the quality of your life.

Rhythmical massage, organ massage and compresses.

Therapeutic baths, footbaths and nutrition advice.

Anthroposophic Medicine (Anthropos = human being : Sophia = wisdom) is a form of complementary medicine developed by Rudolf Steiner that views the entire human being. The anthroposophic approach to medicine adds spiritual insight to diagnosis and healing.

Applied by conventionally-trained medical doctors and nurses who combine orthodox medical treatment with complementary practice, this modern holistic paradigm combines European homeopaths, plant medicines, natural remedies and elements of allopathic principles. Inspired by Steiner (1861-1925), anthroposophic medicine takes into account that human beings, nature and the cosmos are inter-related.

Many other therapeutic disciplines that have developed within the approach include homeopathic and herbal remedies, homecare, nursing, artistic therapy, music therapy, hydrotherapy, curative eurythmy (movement), and massage.

I completed my graduate diploma of Anthroposophic nursing in 2004 and now run a therapy business. (See advertisement). I am available for home visits and offer support for people wishing to die at home.

*Adrienne Henry*

## Deciding to sell is not always easy... Choosing the right Agent is !

**Lets be honest... all buyers want a bargain.. !**

**Don't list with me if you want a quick sale to the first offer of a bargain hunting buyer. I don't offer budget service or results.**

**Premium resale results are achieved through outstanding service.**

**Iain MacFadyen**

Marketing and Sales

**B | 03 546 3577**

**M | 021 025 69751**

[iain.macfadyen@bayleys.co.nz](mailto:iain.macfadyen@bayleys.co.nz)



# Mapua Health Centre

This month we say farewell to Jill Hosking, one of our receptionists. It has been a pleasure to have Jill as part of our team and we have greatly appreciated her skills and enthusiasm. We wish her all the best for the future and hope she will visit us from time to time.

For teenagers and youths there is a website called 4YOUth which provides information on youth services offered in the Nelson/Tasman Region. This covers lots of issues from employment through to health, for 12-24 year olds – [www.4youth.org.nz](http://www.4youth.org.nz). At the Health Centre all consultations are confidential and the fee may be covered by a special fund. You can check this out by simply coming in, ringing 540-2211 or emailing us at [info@mapuahealth.com](mailto:info@mapuahealth.com).

If you are still wish to make use of the flu vaccine, it is available for free to those over 65 years or if you have a chronic medical condition such as asthma requiring regular medication, heart disease, diabetes, etc. If you have any concerns about the vaccine or are not sure if you qualify for a free one please do not hesitate to contact one of our nurses.

In June each year Men's Health Week is held around the world. Locally, it's a chance for New Zealand men to make a difference to their health for themselves and their families. The Get the Tools website ([www.getthetools.org.nz](http://www.getthetools.org.nz)) has been developed to provide the latest health and well-being information and support for Kiwi blokes, and ultimately to ensure that our men get to stick around and celebrate more birthdays with their families. It looks at a whole range of important things from checking out about cancers to sexuality, work life balance, weight, kai and nutrition, mental health, skin, man maintenance and getting active.

As autumn moves towards winter there can be a sense of viruses and bacteria waiting to settle in the nose and, if the immune system doesn't put up an effective fight, then they may start affecting the sinuses or throat and, if you are susceptible, they may spread to the bronchi. There are a few options from research

that could help to prevent or minimise their efforts, eg, probiotics (friendly gut bugs) may help to prevent colds in kids (Cochrane Database Syst Rev. 2011 Sep), garlic can reduce the length of colds and flu (Clin Nutr. 2012 Jan), green tea may lessen flu (J Nutr. 2011 Oct), vitamin C seems to decrease the duration and severity of colds (Cochrane Database Syst Rev. 2012 Nov), vitamin C and E may help prevent colds (J Am Coll Nutr. 2011 Aug), zinc can decrease the duration of the common cold (CMAJ July, 2012) and vitamin D seems also to help prevent flu (Am J Clin Nutr. 2010).

## Police Report

Now that we are into winter the roads are icy in the mornings and there is pea gravel in places, so just be that extra careful if you are running late and are tempted to travel faster than you know you should.

There has been a theft from a local house during the day recently—an opportunist who knocked on the door and stole a wallet from the hallway without the occupant knowing. While making inquiries about this I spoke to several people who said they duck out for a short while and don't bother locking up.

Better be safe than sorry, you never know who might randomly come to your place. **Always lock your house when you leave the house.**

*Grant Heney, Community Constable, Motueka.  
Ph 03 528-1226 (Direct)*

### Mapua Occurrences:

Apr 22: Domestic argument Mapua

May 2: Red Canoe lost in the tide

May 10: Domestic incident Mapua. Intoxicated man taken into police custody in Nelson for the night.

May 16: Female suspended from driving due to excess demerit points on Aranui Road

May 17: Assault at Mapua Wharf

May 19: Theft of wallet from a house. Cash stolen. Wallet found nearby.

## Yoga

*Breathe - Be still –  
Surrender - Be strong*

**Ashtanga Yoga is flowing and dynamic,  
integrating breath with movement.**

**Tuesdays 6–7.30pm (starts June 3rd)**

**Venue :** 'The Woolshed', Lancewood Villa,  
109 Kelling Rd, Upper Moutere

**BYO yoga mat and blanket, \$12**

**0211 450 334 / 03 553 0353**

**[www.angepalmer.com](http://www.angepalmer.com)**

## Studio Space needed

100-150sqm. Clean, dry and secure  
with power and water. Long term  
rental required.

**Contact Lisa Chandler, 021 461 148**

**[www.lisachandler.co.nz](http://www.lisachandler.co.nz)**



# Mapua Bowling Club

## *The Write Bias*

It has been a busy time at Mapua Bowling Club as the 2013/14 season drew to a close.

The 'closing day' triples tournament on was held on Saturday 26 April. There was a great turnout of members and the sun played its part too. A good day was had by all. The tournament sponsors, the Mapua Smokehouse, were very generous. A big thank-you goes to Julina and David who provided some of their delicious smoked fish products to the winning teams of the day. It made for very competitive bowling.

The presentation of the season's championship trophies was followed by a lovely late afternoon tea.

Then in the week that followed it was all hands on deck as members of the Mapua Bowling Club began work on the renovation of the club's green. It has served the club well over the past 10 years but the time had come to replace it. To begin the process, the top 25mm of the green was turf-cut by Ready Lawn. After this first step was completed, a large turn-out of

members armed with wheelbarrows, spades and a great 'can-do' attitude removed the top surface from the green. In a tremendous team effort 33 cubic metres of soil and turf were shifted in one day.

Raffie Muollo and Ben Whitten are supervising the project assisted by Dave England. After level checks are completed, new topsoil will be laid and hydro-seeding should take place in July. The club is looking forward to playing on the new green in November. In the meantime, regular social evenings involving in-door bowls, table tennis, pool and cards in the clubrooms are planned throughout the winter.

The Mapua Bowling Club AGM was held on Saturday, 17 May, with a good number of members in attendance. Dave England, who has served the club well in the role of president, stepped down from that position. The decision on who will fill that role is yet to be made. The other executive committee positions were filled with keen support from members at the AGM. They are: Vice-president, Wayne Chisnall; secretary, Jean Daubney; treasurer, Margaret Busby. For information about bowling, coaching or

booking the clubhouse and facilities please call the secretary, Jean Daubney (540-3281) or email [s1ad2as3@xtra.co.nz](mailto:s1ad2as3@xtra.co.nz)

*Barbara and Kevin Brown*



**Up it goes:** Club member Les McAlwee plays his part in the removal of the old turf, using an old-fashioned machine called a wheelbarrow, driven by manpower...



## *Swim @ Mapua Chalets*

From just **\$15** per hour enjoy private use of our **heated indoor pool**. 30 degrees + even if it's freezing outside! Perfect for some private exercise, a family swim, or a children's party.

Did you know our indoor and outdoor pools are now open to the community throughout the year?



**Book your private pool experience instantly on our website at [www.activekidzswimschool.co.nz](http://www.activekidzswimschool.co.nz) or call 03 540 3310**

# Mapua Memories Closes

It is with regret that Mapua Memories in Aranui Road has closed. It because of a lack of custom. Was the timing wrong, was the position wrong?

To explain: The store was set up to act as an information centre, a souvenir store and a gift store, a booking office for Wilsons Travel, the buses that call through and other sightseeing companies, plus the opportunity to continue the Video Ezy concept which had closed down.

The biggest challenge was telling folk we were there, and yes, there were lots of discussions about signage. Signs were eventually put up but they don't happen overnight and are not cheap.

The other concept was to attract bike riders on the Tasman Great Taste Trail but they all appeared most committed to their ride ahead and just zoomed past.

Yes, the local interest grew and those that visited bought said, "What a great shop."

Fortunately my agency business, "Champion Agencies," working in tandem with the shop continued to grow and we produced some great products for the Animal Farm, Friends of Flora, the Janszoon Trust and the Mapua Football Club. Plus our exclusive Mapua products that sold very well.

There was even a re-order of the beautiful Hamish T-shirt based on the photo by Chocolate Dog productions and this is still available from Adele at Hamish's café on the wharf.

Is there a need for such a shop? Yes, I believe so but it needs to be in the wharf area where the action is.

The questions asked at the store were very varied, such as: "Where can I get a haircut? Where is the camp? How do I get to this B&B?" Even, "Where is the harbour and where can we swim? Can I hire a kayak? What time do the buses go through?"

Yes there was that demand but as you are aware that is free information and we didn't charge to put in rack cards advertising local features etc.

As all the I-Sites are aware you need to sell something for a store to survive. Fortunately the agency and marketing business continues to grow and we are about to add a new product, "Gifts2Britain," for all those who still have family back in UK and Europe.

Watch out for advertisements on this service. A big thank you to all those that did visit Mapua Memories and keep your open—it may just return.

*Rob Sutton*

Hamish's



**ICE CREAM  
PARLOUR & CAFÉ  
Mapua Wharf**

- award winning coffee
- family affordable
- friendly service
- birthday parties catered
- gluten free choices

- real fruit ice cream & rolled ice creams, old fashioned milk shakes, pies, cakes, croissants, paninis, iced chocolate and more!

**LOCAL OWNER/OPERATOR**  
**Adele & Bruce Calteaux Ph 540 3861**



**tasmanbayvets**  
LIMITED

69 Aranui Rd, Mapua. Ph 540 2329  
400D High Street, Motueka, ph 528 8459

**New opening hours for Mapua Clinic  
from May 1st:**

**Mornings: 8am - 11am  
Afternoons: 3:30-6pm**

[www.tasmanbayvets.co.nz](http://www.tasmanbayvets.co.nz)




APPLE SHED

Cafe • Bar • Mapua Wharf

Open every day for breakfast, lunch and dinner.  
Ph 540 3381    [www.appleshed.co.nz](http://www.appleshed.co.nz)

Supporting our local suppliers, local school and the Great Taste Cycle Trail



## Gavin Barlow

For all your Real Estate needs give me a call.  
Great results with local knowledge and plenty of integrity.

*Best result guaranteed*



Phone 03 540 3425  
Mobile 027 559 1993  
2a Iwa Street Mapua





PROPERTY SALES (NELSON) & REAL ESTATE LTD. MEMBER OF THE HARDCOURTS GROUP



# Mapua and District Probus Club

The guest speaker at the club's May meeting was Athol Allen, speaking on his long-time involvement buying and renovating horse-drawn carriages, commonly known as gigs. Athol's early interest in this form of transport started when he was six and his grandfather from Yorkshire, England, showed him a gig. He grew up in the Sherry River area and he met and became friends with Fergus O'Connor, well known locally for his breeding and managing Clydesdale horses.

Athol spoke about other people involved with horse breeding. At the age of 11 he was given a part-time job polishing the gigs of Mr and Mrs Higgins, who were involved in a variety of shows with their horses. Athol came across a beautiful gig at Marsden Valley owned by a Mr Ching. This gave him the inspiration to own his own gig.

Athol also wanted to buy a horse from a Mr Giblin. He had to find \$10 for the gig and \$20 for the horse. He was able to get a job making apple boxes at a rate of 3 cents an hour, and another job of picking more than 300 buckets of beans.

Athol was able to pay Mr Ching the required \$10 for the gig. He spent several months upgrading the gig and was eventually able to show at a Nelson A&P Show. Mr Ching was most impressed with Athol's work on the gig. He set this as a standard for himself to be self-reliant in life and has passed this philosophy on to his own children.

His second gig was found in poor condition abandoned under a tree. It had only its steel framing and had to be completely rebuilt. During that time Athol was working at the Nelson freezing works and was

fortunate to have the use of some of the company's equipment to rebuild the gig.

Athol now owns five gigs that he has upgraded and maintained in pristine condition.

The mini-speaker was club member Ella Theobald who described her early life. Her father was a printer in Alexandra. She has happy memories of early family holidays in Motueka and Torrent Bay with her grandparents. In those days there was a good local service, such as the delivery of milk and bread to their gate. During the days of World War Two, the family made good use of their radio in keeping up with events of that time.

On leaving school Ella took a teaching course at Christchurch Teachers' Training College. On completion of the course she met her husband, Ted, and they moved on to an isolated Lands and Survey block in Hawkes Bay. It was a 2½-hour drive to Napier for shopping. Their mail was collected once a week, and their main source of communication was by a paging system to keep in contact with their family. From there they moved to Te Puke for a few years before moving back to Motueka, where they bought a property with an orchard.

They had two visits to Zimbabwe to help her brother. Ella took on a part-time job teaching the local children. They had the use of a house that was built by the US High Commission. Ted worked as an engineer and three years later they did two years' years of voluntary work on the Solomon Islands for the Methodist Church. Ella's hobby is making a variety of cards that helps to raise money for various charities.

**GORDON WEBB**  
 NUMBER 1 2007/08/09  
 in **SUMMIT REAL ESTATE** MREINZ  
 Tasman - Nelson - Marlborough Regions  
 RUNNER UP  
 2005/06 2006/07  
 'A Good Deal Better'  
 Office: 03 544 2900  
 Fax: 03 544 2909  
 gordon.webb@summit.co.nz  
 www.summit.co.nz



**Gordon Webb**  
 Residential & Rural  
 Sales & Marketing Consultant  
 Mobile: 021 540 241  
 A/h: 540 2415



Lawyer: What was the first thing your husband said to you this morning?  
 Witness: He said, "Where am I, Cathy?"  
 Lawyer: And why did that upset you?  
 Witness: My name is Susan.

**GAP ARCHITECTURE** **ADNZ**

Multi-Award winning designer

New Homes and Alterations

Competitive Rates

Call Terry Duff




Phone 027 280 1378 P.O. Box 3847 Richmond Nelson 7050  
 terry@gap-architecture.co.nz



# Mapua Library

In my annual report to the Mapua Community Library's AGM last month I reported that the library had issued the greatest number of books in a single month—1995. This reflects the continuing increase in membership numbers and the great work in buying books that our patrons want to read. Our book-buying programme keeps the book stock modern and relevant.

Our volunteer roster continues to have a waiting list. This must be an unusual phenomenon for any volunteer organisation. I thank the large number of volunteers that quietly and efficiently go about their work. We couldn't function without them.

Grants received over the past year were from Club Mapua, Tasman District Council, Canterbury Community Trust, the Lion Foundation and the Mapua/Ruby Bay and District Community Trust. All of these grants are valued and put to good use.

Fund-raising included the usual pre-Christmas raffle as well as a number of book sales. A most successful movie night was organised by two volunteers. The BEARS/school holiday programme was not held

but a keen group hopes to continue the programme in the next school holidays.

We are pleased to continue to display the work of local artists on our internal walls and street-facing windows. We have also made the most of space in the entrance area for book displays with a topical theme.

Lynley Worsley

## Library Hours (closed statutory holidays)

Monday	2-4.30pm
Tuesday	2-4.30pm
Wednesday	2-6.30pm
Thursday	10am-12.30pm; 2-4.30pm
Friday	2-4.30pm
Saturday	2-4.30pm

mapualibrary@xtra.co.nz

www.mapuacommunitylibrary.co.nz

Major sponsors: Canterbury Community Trust, Lion Foundation,

Tasman District Council, Mapua and Districts Business Association.

## BOOK REVIEW

*Beauty From The Inside Out* by Libby Weaver. Reviewed by Joyce Bullock. This book is available at the Mapua Library.

This is a book I wish I had been given to read when I was 17 years old but for readers of advanced years there is still much to be gained from digesting the contents.

But readers beware! If you are set in your dietary habits and have no intention of reducing your intake of alcohol, caffeine and refined sugars (the liver loaders) ignore my review and don't borrow this book from our library. It would be a pointless guilt trip!

Libby Weaver has a PhD in nutritional biochemistry and the preface of her book reads: "My mission is to educate and inspire, enhancing people's health and

happiness, igniting a ripple effect that transforms the world."

When health experts are prophesying that it is likely that antibiotics will be unable to heal us in 15 years' time her focus on healthy living seems very timely.

As research for this book she asked people what they thought "dulled their shine."

She suggests that readers note what they think dulls their shine and what they want to focus on so that they can be guided to make new choices that help support their wellbeing.

Here is a book packed with common sense at a time when too many people believe that products alone can improve your health and appearance. She looks at our health as it impacts on beauty and aging and at the many facets of optimal body functioning, guiding us towards the lifestyle changes needed to achieve health and vitality.

The role that food, nutrients and water play in physical appearance are discussed, the function of hormones and stress are explored and the importance of sleep and keeping mobile are explained.

She entitles all real foods as super foods. Each has its own unique combination of nutritional value to offer you and these and their beauty benefits she lists. Her passion for helping people extends to explaining in a simple form the complex intricacies of anatomy and physiology.

ANTIDOTE APPLIANCE REPAIRS LTD



Servicing all major brands of whiteware.

TIM LLOYD  
79 Treeton Place  
Wakefield  
antidote@ihug.co.nz

For warranty, service or second hand sales call:  
**03 541 8877 or 021 1601 004**  
www.antidoterepairs.co.nz

# JELLYFISH

## CAFE AND BAR

Shed 1, Mapua Wharf  
Winter hours: 9am-late Tues - Sat  
9am to 3ish Sunday & Monday

*Tuesday is curry night,  
takeaways available*

Wednesday night GRAB 2 is back:  
2 mains, 2 glasses of house wine, \$60.

You must book and mention this deal

Ph (03) 540 2028

[www.jellyfishmapua.co.nz](http://www.jellyfishmapua.co.nz)

## STYLE ON STAFFORD

Natural fibres for the discerning woman

MERINO & COTTON KNITWEAR

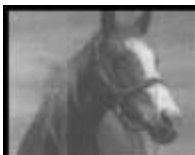
Phone 03 540 3564

Mobile 027 4307 953

ADRIENNE PAGE KNITWEAR

172 Stafford Drive RUBY BAY  
P.O. Box 41 MAPUA 7048 Nelson NZ

[www.styleonstafford.co.nz](http://www.styleonstafford.co.nz)  
[info.adriennepage@xtra.co.nz](mailto:info.adriennepage@xtra.co.nz)



**Horse Cover  
& Gear Repairs**  
**Horse Cover Washing**

**Prompt Service - Good Rates**  
**Contact Lawrie, 1350 Moutere Hwy**

**Ph 03 543 2234**

## Mid-Winter Christmas Lunch

**with the Moutere Inn**

Sunday 22nd June  
Book for one of two sittings:  
12pm - 2pm  
2pm - 4pm

*Traditional Christmas Mains*

**Roast Turkey**

or

**Braised Leg of Lamb**

with all the trimmings

*Traditional Christmas Desserts*

**Christmas Pudding**

with vanilla icecream, or

**Bread & Butter Pudding**

with vanilla icecream

\$25.00 per person, \$15 for kids

For bookings please call: 543 2759

or email: [info@mouterein.co.nz](mailto:info@mouterein.co.nz)

[www.mouterein.co.nz](http://www.mouterein.co.nz)

## MAPUA PLAYCENTRE



84 Aranui Rd, Tel: 540 2386

(We're behind the tennis courts)

A staff/ parent run Early Education  
Centre for 0-6 yr olds.

- Individual learning plans
  - Te Whariki Early Childhood Curriculum
  - Many different activities, including outings, with emphasis on play.
  - Large indoor and outdoor areas.
  - WINZ subsidy available (1<sup>st</sup> 3 visits free)
  - New families always welcome
- Mon & Fri 9.30am-12.00noon**



**DEBBIE WATSON**

Licensed Real Estate Salesperson (REAA 2008)

Phone 03 544 5488 / 021 462 629



74 Higgs Road



12 George Street



Your home here!





# Mapua Community Hall Activities

## Events this month:

**23 June: Hall Society AGM (see below)**

**Saturday 28 June: Mid Winter Function**

Social Get Together, Music, Food and Fun  
4.30pm – 7.30pm

**Friday 25 July: Pecha Kucha Evening**

Pecha Kucha is Japanese for Chit Chat.

It will entail a variety of topics with six minutes per speaker. If you have a subject you are knowledgeable or passionate about and would like to take part please contact:

Margaret Cotter 540 2195, [rmcotter@tasman.net](mailto:rmcotter@tasman.net) or

Pete O'Halloran 540 2874, [pohalloran@paradise.net.nz](mailto:pohalloran@paradise.net.nz)

Help is available for putting together the powerpoint presentation

**Saturday 23 August: Anniversary Ball**

(see separate advertisement)

## **Hall Coordinator employed.**

The Hall Society is happy to announce the employment of **Megan Grove-Roberts** in the newly established position of Hall Coordinator. We thank the Canterbury Community Trust for the support that made this possible until Christmas 2014. Megan will work at the Hall office on Mondays, Thursdays and Fridays between 09.30 and 12.30, and she will handle admin, bookings, promotion etc for all Hall activities. You can contact her via phone at the Hall (540-2330) or ([mapuahallsociety@gmail.com](mailto:mapuahallsociety@gmail.com)). Bookings can also be made via the website: [www.mapuahall.org](http://www.mapuahall.org)

## **ANNUAL GENERAL MEETING (AGM), MAPUA PUBLIC HALL SOCIETY**

**MONDAY 23 JUNE 2014, 7:00pm at the Mapua Hall**

We now have a wonderful refurbished community hall in Mapua that is much enjoyed by many different groups. The hall is a 2 million dollar facility owned and operated on a non-profit basis by the Mapua Public Hall Society. The AGM of the Society reviews the activities and elects a hall committee to manage the affairs of the hall. Every "resident in Mapua, Ruby Bay, the surrounding Moutere Hills district and other interested people" can be a member of the Society (\$10/year), and are welcome to attend the AGM. You can join the Society during the AGM and get voting rights.

**Help us to sustain the future of our hall. Please attend our AGM !**

Supper & mulled wine will be served

### ***A note from the Society Chairperson***

I have been Chairperson for the past three years and have enjoyed working with the enthusiastic and hard working group of community volunteers on the Committee and sub-committees. I want to express my great appreciation for the excellent upgrade of the old hall achieved by the Project sub-committee and the full Committee while I had to spend long periods away working in Europe. My research work on climate change and health will require long periods in Sweden during the next 12 months, so I will resign from the Mapua Hall Committee at the AGM. If anyone interested in becoming a member of the Committee would like to know more about this important volunteer work, please contact me or any of the other current members of the Committee.

***Tord Kjellstrom***



**Thinking of Selling?**

Call us today and ask about  
our Winter Marketing Packages

**Harcourts**

The only Real Estate Office  
in Mapua

2a Iwa Street - 03) 540 3425

Gavin Barlow 027 559 1993 Wendy Perry 027 249 1701

## Fire Brigade

April 14 to May 14 call-outs



Apr 21: Car fire Westdale Road. Passer-by extinguished it with portable extinguisher. Brigade finished the job.

Apr 22: Oven fire Flaxmore Road. Turned back by Upper Moutere

Apr 27: Oven fire Maisey Road. Owners extinguished it with portable extinguisher. Brigade investigated other matters.

May 15: Car in estuary. Assisted Motueka.

May 16: Oven fire at Mapua School. Burnt cookies. Calls this year: 22.

**Safety Tip – keep all objects at less 1 meter away from heaters and fires.**

Visit as at [http:// www.mapuafire.org](http://www.mapuafire.org)  
Or Google Mapua fire.



**HYDE TREE SERVICES**

- Trees felled or cut back
- Sections cleared
- Splitter available
- All general section work undertaken

**FIREWOOD AVAILABLE NOW**

*Please call us to enquire about any other services you may need.*

**Matt Hyde**  
Mobile 0221 394 662 / Mapua 553 0304

### Outdoor Fires Banned

No outdoor fires are allowed in the greater Mapua area between June and August. The TDC has a fire-sensitive area to prevent extra smoke in and around built-up areas.

This includes all Mapua Village, Ruby Bay to the top of Brabant Drive, Pine Hill Road across Pomona Road to Seaton Valley Road and Stagecoach Road and back down the highway to Mapua Drive.

Visit the TDC website and search TRMP Maps> Special Maps> Part 6 discharges and look for Maps 268-269 (Mapua) and Maps 262-267 (Tasman).



**Richmond Physiotherapy**

*Active well-being*

**Get Moving**

ACC subsidised treatments still available  
when you visit our clinics

174A Queen Street, Richmond 544 0327  
69 Aranui Rd, Mapua 540 2216

**Home Tiling Ltd**

*Experienced local tiler*  
*Obligation Free Quotes*



Contact Eric

540 3821 OR 027 226 8194

Edited by Andrew Earlam (advertising) 540-2845, and Terry Smith (editorial) 540-3203. Views expressed are not necessarily those of the editors. We aim to have the newsletter out by the 1<sup>st</sup> of the month. The deadline for emailed items to [coastalnews@mapua.gen.nz](mailto:coastalnews@mapua.gen.nz) is the 20<sup>th</sup> of the month. Notices are a gold coin donation in the collection boxes. Club notices are free. Printed by the Tasman District Council.



# Mapua School to Celebrate Centenary

**School** Now is the time to prepare and we need your help. The 2015 school year will be a year of celebration for Mapua School, its students, past teachers and staff, alumnae and the wider Mapua community.

The Centenary Celebrations will provide a wonderful opportunity to share perspectives of how local, national and world history impacted student and family life over the past 100 years. In addition to being a fantastic learning opportunity for our present students, it will also be fun remembering teachers and classmates, renewing friendships and sharing memories.

We don't want to miss the opportunity to include you, your stories, your photos or your families in the various activities and publications being planned. We want to keep everyone informed about the emerging activities and dates for 2015. Please forward any names, addresses or details for yourself or other alumnae. Events are being planned to begin the first

week of school and continue throughout the year, culminating in the opening of two time capsules in late November/early December

We would love to have any photos of life at Mapua School (class or individual student photos, trips and activities, campus and classroom as well as general community) from the past 100 years. We know that your photos are precious and we will ensure that they are carefully handled and returned quickly. You keep your originals and we would scan or take copies.

Our goal is to create a photo library, categorised by decade that could be accessed via the school's webpage. A selection of images will be used in a "photo roadshow" to be displayed at Mapua School as well as various places throughout the community.

If you are interested in helping plan, organise or help with the Centennial Celebrations, we welcome you. Please contact [admin@mapua.school.nz](mailto:admin@mapua.school.nz)

Looking forward to celebrating the BIG 100.

## Solar that works at night!

Save money and the environment with the Energie thermodynamic system, the Next Generation of solar hot water heating.



18 Warren Place, Mapua 03 540 3003  
[www.thealternativeenergycompany.co.nz](http://www.thealternativeenergycompany.co.nz)

The Alternative Energy Company is proud to be based in sunny Mapua. It is the ideal location for their Energie thermodynamic solar hot water heating system. Energie is the Next Generation of solar technology – it is so advanced that it provides all your hot water 24/7, 365 days a year and it even works at night!

There is no heavy water tank on the roof, no excess boiling water dumped onto the roof and no need for a back-up system—just reliable hot water provided by one small lightweight solar panel. Energie saves you 30% of your power bill and is kind to the environment.

Geoff Read, director of The Alternative Energy Company, had his own building company in UK for 25 years. He was so impressed with the Energie thermodynamic system that he obtained the rights to supply New Zealand. Geoff holidayed in the Nelson region for many years and loves Mapua.

Pop down to 18 Warren Place and meet Geoff and the amazing Energie thermodynamic solar water heating system. While you are there, ask about his high performance insulation board—it has almost double the 'R' value of traditional insulation.



**tasman tree fella**

LIMITED

*Do you have a tree problem?*

**Contact Matiu Noakes-  
 021 1058 359 or 03 526 8001.**

- Specialising in confined space tree removal and tree reduction
- Large chipper available
- Fast and friendly service
- Free no obligation quotes.

**felling, height reduction, trimming,  
 chipping, firewood splitting**

## Hazelwood

**Simply Great B&B in Mapua**

Ian & Sally Williams

6 Jessie St  
 Mapua

Home: 03 540 2155

Sally's phone: 021 288 9448

[sally@hazelwoodmapua.co.nz](mailto:sally@hazelwoodmapua.co.nz)

[www.hazelwoodmapua.co.nz](http://www.hazelwoodmapua.co.nz)



## A Morning with Mushrooms


Twenty ladies from the Mapua Recreation Group enjoyed a wonderful morning at Neudorf Mushrooms last month, accompanied by the owners, Hannes and Theres.

We were disabused of many of the myths about the differences between edible and inedible fungi, and learned that the white spider-web like structure found underneath pine needles or pine cones on the damp ground, is the mycorrhiza—the real mushroom. The edible part of the fungi is actually the fruiting body of the mycorrhiza.

After a very informative and fascinating walk through the property we were treated to fried saffron milk cap mushrooms (unique to Neudorf Mushrooms) and soup made from their dried wild mushroom mix. Yum!

Photos show the fried saffron milk caps (above), and the mycorrhiza (but that particular fungi is a very young fly agaric toadstool, is inedible).

*Jean Woolfe*



**ARTS ON TOUR NZ PRESENTS**

# PROMISE AND PROMISCUITY

A NEW MUSICAL BY **JANE AUSTEN**  
AND **PENNY ASHTON**

"PENNY ASHTON IS A DELIGHT TO BEHOLD."  
★★★★★ CBC WINNIPEG

★★★★★ "SPIFFING." EDMONTON JOURNAL

"AN ATTRACTIVE BALL OF A SHOW." NZ HERALD

**Friday 13 June 8pm**  
**The Playhouse Café, Mapua**  
\$20. Book: Playhouse Cafe and Everyman records


## tasman

### homeopathy

Linda Morgane Classical Homeopath - dip. hom

ph 03 540 3653 • 027 4510 178

peatfamily@xtra.co.nz 211 Westdale Road, Mapua  
Redwood Valley 7081



**THE GRIND**  
Espresso Bar & Roastery

**@The Tasman Store**  
Just up the road on the Great Taste Trail  
Award winning coffee, real fruit ice creams, pies,  
sandwiches, home made cakes & cookies.

**Open 7 days**  
Aporo Rd, Tasman ph 526 6275





## NELSON RETURNED AND SERVICES ASSOCIATION MOUTERE HILLS SUB-BRANCH

The Annual General Meeting of the Moutere Hills Branch of the Nelson RSA will be held on Monday June 23rd at 1400 in the RSA room.

- Agenda:
- |                        |   |
|------------------------|---|
| 1. Welcome             | 2. Apologies  |
| 3. Last Post           | 4. Ode  |
| 5. Minutes of 2013 AGM | 6. President's Report   |
| 7. Treasurer's Report  | 8. Election of Officers: President, Secretary/ Treasurer, Committee, Support Committee, Auditor |

Please be advised that both the President and the Secretary/ treasurer are not seeking re-election.

*John Sharman, Secretary*

# BACON & EGGS



## HANDYMAN BUILDER

**Pat Ashton 0276977332**

*Gavin Lambert*

**Master Painter**



**CRAFTSMAN PAINTERS &  
DECORATORS**

**GAVIN LAMBERT (OWNER)**

**Ph: 03 540 2748 Cell: 021 476 318**

Email [painter@scorch.co.nz](mailto:painter@scorch.co.nz) / 26D Jessie St, Mapua, 7005  
[www.lambertdecorators.co.nz](http://www.lambertdecorators.co.nz)

**architecture studio mapua ltd**  
new homes & renovations  
residential & commercial architecture

**simone wenk**  
reg. architect (germany)  
136a aranui road  
[simonewenk@xtra.co.nz](mailto:simonewenk@xtra.co.nz)  
p 03 540 3282

**lbp (design2)**  
mapua 7005  
[www.architecture-sw.co.nz](http://www.architecture-sw.co.nz)  
m 0211 049 039

# EMPLOYMENT SAFETY SPECIALISTS

**Staff conflict issues?**

**Need employment agreements?**

**Want a Health and Safety Manual?**

**Disciplinary & poor performance?**

**Call 0274296344 for a confidential  
complimentary discussion of your  
business needs.**

**We work with local Tasman businesses  
and keep things real (including costs).**

Mapua

# ELECTRICAL

**JIM BROWN**

Registered Electrician

Phone 540 2271 Cell 027 540 7060  
RESIDENTIAL – INDUSTRIAL – COMMERCIAL

## NEED AN EXTRA ROOM?

- Storage
- Home Office
- Sleepout
- Rumpus Room
- Additional bedroom
- Farm Worker's room
- Small Business Office
- Site or Sales Office
- Beach accommodation



**from \$60 p.w.**

**0800 58 78 22**

**JUST  
CABINS**

RENT A ROOM

**[www.justcabins.co.nz](http://www.justcabins.co.nz)**

# Mapua Library: part of Local History

*By Sue England*

This is the story of a library. And it is also the story of a doorstep.

Twenty years before Martin Luther King had his dream, Mary Robb had a vision, a vision of books being available to anyone and everyone that lived in Mapua and its environs. It was 1943.

The idea conceived by Mary and sanctioned by the National Library gave birth to a regular loan of 50 books from the mobile library service. Armed with this supply a group of book-loving women opened "Mapua Library" in the porch of a private house in Toru Street every Saturday for an hour. With several mutations from those heady beginnings on a doorstep to the present day, this ticking heart of the community has never looked back.

A larger space was needed to support the increasingly popular exchange of books. In 1980 the local Hall Society was enlarging its own facility and when approached agreed to make a room available for the library. An inner sanctum, luxury unbounded, the library ladies were in heaven until disaster struck in 1987. The mobile service ceased operating. No mobile library, no books. Community libraries around the country were deemed too small and encouraged to close.

The vision hadn't come this far to be thwarted without a fight. Subscribers felt that the rural area of Mapua needed its own library. So they went to the top. Why not? A letter written to the Right Honourable David Lange, the Prime Minister of the day, putting the facts before him, must have impressed because a visit from the National Library was convened. But several months of anxious waiting followed until finally, a reprieve. With the assistance of local Richmond Library, Mapua was able to continue offering a book-lending service.

While books were continually borrowed from the council-operated Richmond Library, the stock that Mapua was quietly gathering together necessitated several shifts to larger locations. A saviour was at hand; the Mouere Hills RSA very generously offered to share their site in Toru Street. The strength of a small community was never better revealed than with the flurry of fund-raising that ensued. Additional financial help from the Lottery Board and Canterbury Community Trust led to the construction of a permanent, purpose-built shared facility and in 2002, with much excitement and ceremony, the doors were opened by "National Treasure" Margaret Mahy.

Mapua Community Library is unique. It retains its chartered status and is the only such facility in New Zealand to be run totally by volunteers with no

paid personnel whatsoever. There are no joining fees, no charges, temporary memberships are eagerly applied for by local visitors and 90% of all income is spent on books. This income is generated by donations, grants and fund-raising and the governance of all aspects of the library is undertaken by some ten volunteers, the committee. The philosophy that facilities are free and available to all is a good one.

The history thus far described is taken from library records, gathered with foresight for just such a moment as this. But as a patron, working volunteer and fund-raiser of the library since 2008 I can now share my own knowledge.

Life continued smoothly with no challenge to tradition. And that tradition was labour-intensive and totally based on a manual-issue role model. Book supplies and patrons increased at a gradual rate. Funding came from grants and specific fund-raising events. All was sunny in the streets of Mapua. But it took more radical thinking to make two startling changes that revolutionised the functioning of the library. The year was 2010.

Expertise and time given by volunteers led to the month of August and the installation of the Open Source Software, "Koha". The library was computerised. Forget the doorstep; it had its own website! It is fair to say that there was some resistance to change, particularly from the more elderly volunteers, but once realisation dawned that the system was simple to

use, efficient and effective and really enhanced the services that the library could provide, calm prevailed and happy smiles returned. With every volunteer trained to a working proficiency and able to use the system competently to issue books, enrol new members, place holds and deal with renewals, the library could now provide information services, literary nourishment and function on an international basis.

Running parallel with the Koha developmental stage, a major fund-raising initiative was conceived. The project was ambitious for a volunteer-driven library but its successful outcome was a measure of the willingness and enthusiasm of all the volunteers to play a part. A year in the planning and driven by a team of five ladies, the first ever three-day Literary Festival involving noted authors from throughout New Zealand took place at the end of March.

Margaret Mahy (who else?) was invited and accepted the role of patron. She was outstanding and a major draw for children and adults alike. The boldness of the enterprise with ideas on a grand scale translated into grand funds and many lovely new books for the library shelves. It was a huge success and merited the accolade of Tasman District





“Supreme Winners” at the annual Trustpower Community Service Awards.

Children love bears. They also love B.E.A.R.S. and this reading scheme was implemented into the library calendar in 2011. Why? Because the children wanted it. The “Be Excited About Reading Scheme” was introduced from Canada and encourages children who are shy or having difficulties with reading to read to a non-related adult. I don’t know who had the most fun and pleasure, the children choosing a book and reading out loud or the adults who helped them. The library was full of happiness. Many of the adults were library volunteers but friends from the community also joined the reading gang. Such was its success that it was repeated in 2012 and is now a regular annual event.

In 2012 we discovered that Joe Bennett loved us. Vanda Symon dressed up for us. Jenny Patrick flew from Leipzig to be with us. And Craig Smith brought his Wonky Donkey to be with us. Learning from the

first experience, a second and improved Literary Festival took Mapua by storm with a full and varied programme. Sell-out audiences enjoyed three days of fun that produced financial results on par with 2010 and much good cheer within the village.

Children from the pre-schools in Mapua regularly visit the library and in 2011/2012 we had weekly visits from 120 children from Mapua School as building work made their own library inaccessible. This service was offered by volunteers outside normal opening hours, serving to strengthen the bond between library and school.

And this brings the story up to date. In 2013 at the grand old age of 70 it goes from strength to strength with a stock of more than 10,000 books and more than 1300 families registered as patrons. The library has 50 volunteers (and a waiting list!) that regularly open the doors of this beautiful library to provide the community with an exemplary service that goes way beyond the provision of books. The rule of absolute silence synonymous with libraries does not apply. The volunteers enjoy talking about books. They like to hear the children laughing in the book corner and try to make it a vibrant and interesting experience. Every six weeks there is a new exhibition in the library. A variety of contributors display photographs, multi-media paintings, textiles, local projects and the art and craft from school and pre-school children.

Mapua Library is very special place and holds a treasured place in the hearts of the villagers. But the true charm is not in its physical nature and location but in the people that willingly give up their time to serve their neighbours. Without all the volunteers the library would not exist. Without the vision of Mary Robb and the loan of a doorstep, the community of Mapua would be a lesser place.

## Scaffold on wheels

**Light & easy to handle**  
**Easy to move**  
**Easy to assemble**  
**Available in different sizes**  
**Ideal for house painting & maintenance**



**Free delivery in Mapua**

**SCAFFOLD**

**Fred Cassin**

**Ph: 0274 392 417**



## Mapua Pharmacy

Prescriptions	Dirty Dog sunglasses
OTC medicines	Trilogy Skin Care
Vitamin supplements and health products	Hats and bags
Columbine Range	Aussie Soles Footwear

Located in the village mall behind The Naked Bun

**Tel 03 540 3735**  
**Fax 03 540 3741**

Opening hours, Mon – Fri 9AM – 5:30 PM  
 Closed Sat and Sun.

## QUANTUMTOUCH®

HANDS-ON RESONANCE HEALING TECHNIQUE

LIFE FORCE ENERGY DE-STRESS PAIN RELIEF ACCELERATED HEALING DEEP RELAXATION AMPLIFICATION OF ENERGY	<b>SUSANNE BRUTSCHER</b> MAPUA 03 540 3672 HOME@CALLFORDDESIGN.CO.NZ WWW.QUANTUMTOUCH.COM
--	--

CERTIFIED QUANTUM TOUCH PRACTITIONER  
 Member of the International Society for the Study of Subtle Energies and Energy Medicine, ISSSEEM

## WAKEFIELD QUARRY

Pig Valley, 6km from Wakefield



**FOR:**

- Basecourse 70mm**
- Topcourse 40mm**
- Topcourse 20mm**
- Drainage metal 40mm**
- Landscape Rock**
- Lime**

**Truck Available**

Limeworks Tony Dick Philip Dick	541 9093 541 8392 a/h 541 8666 a/h		<b>OPEN:</b> <b>MON - FRI 7 am - 5pm</b> <b>No longer open Saturdays</b>
---------------------------------------	--	---	--

# Murphy's Law Still At Work

By Peter Francis

**I**t was 5.48pm when I walked into the bedroom and discovered the still warm but lifeless body on our queen bed! We were still trying to decide how to dispose of it when: Knock, knock, knock on the front door!

Oh shit. Tonight of all nights our very first dinner guests have arrived early, so we're totally freaking out.

My wife and I had returned from our honeymoon only the previous night, when I remembered at our wedding reception I had foolishly invited my boss and his high-maintenance wife to join us for dinner at six o'clock tonight.

My brand new bride had never cooked a three-course meal in her life and certainly had never formally entertained anyone before, let alone a "Big Boss", so our neophyte marriage was undergoing its first stress test! I'd asked if we could have my favourite vichyssoise soup for the first course, but had been bluntly told, "If you want something that damn fancy you'll have to cook it yourself."

Knock, knock, knock!

"There they go again, now I'm having a full-blown anxiety attack. What the hell are we going to do with the body? We daren't keep them waiting any longer and we can't let anyone see it."

"Quick darling, you go, answer the door, take them into the front room, tell them I'm still getting changed, pour some strong drinks into them, then hurry back and help me find somewhere to hide this bloody corpse."

Desperately I searched the house for an appropriate hiding place, until I noticed a large trapdoor in the dining room ceiling.

Sweating from the combination of effort and stress, I hurriedly pushed the dining table to one side, climbed onto one of the chairs and, having come back to assist, my wife helped me to heave the stiff up through the trapdoor opening. She returned to the front room to entertain our guests, while I tied a cord around one ankle of the body for easy retrieval once our dinner guests had gone.

I pushed the trapdoor back into place, rearranged the dining table and somehow pulled myself together, went to the bathroom, washed my hands, brushed my hair into place and joined our guests in the front room, apologising for my tardiness, as my boss politely said, "No, no worries, it's my fault, we arrived much too early."

Half way through our soup, our conversation was interrupted by a loud scrabbling noise in the ceiling above us, followed by a muffled cry.

Bright red blood dribbled from the trapdoor onto our dining table, forming an odorous pool in the cen-

tre of our white Irish linen, wedding gift, tablecloth, and just narrowly missing the expensive floral centre-piece my boss's wife had given us.

My hapless bride gasped, then slumped to the floor, unconscious, the boss's wife's face turned a ghostly pale as she gagged on her spoonful of Watties "Spicy Tomato." My boss turned a bright shade of red and demanded to know, "What the bloody hell's going on here, have you flaming well murdered someone?"

I have to say at that moment my career prospects seemed to be zip.

The scrabbling grew louder, I looked up and to my horror saw the trapdoor had cracked open, and suspended by the leg cord, a huge convulsing rat fell from the opening, swinging wildly backwards and forwards over the beautifully set dinner table, blood falling onto our plates:

Drip, drip, drip.

**RUBY COAST ACCOUNTING**  
*Providing the bare essentials  
In Accounting Services*  
• Administration • Bookkeeping  
• Data Entry • Typing  
Bernie Kaczon  
Tel: (03) 526 6263 Cell: 021 0298 7087  
22b Brooks View Heights, Tasman  
Email: bernie.kaczon@clear.net.nz

**MOUTERE MOWING & FENCING**  
MAPUA BASED  
• Lifestyle block mowing  
• Park Mowing  
• Rural Fencing  
• Residential Fencing  
CHARLIE GOULTER  
M 027 8463 111 A/H 03 540 2474  
No obligation quote

Insurance Work • Welding Plastic And Steel • Small Panel Repair Shop  
**Karpaintz Ltd**  
Panel 'n' Paint  
03 540 2477  
Unit 14 Warren Place Mapua  
Karpaintz@xtra.co.nz  
Graham and Julie Cox  
Courtesy car available



## Five Fundamentals of Business Planning

The most important thing to remember as a business owner navigating uncertain times is simple: with a proper planning process in place you can have confidence. Believe that you will make it through the storm, that the clouds will part and sunshine will once again fall upon your enterprise.

Although external factors are usually ignored because they are out of our control, they need to form part of our plan. But the things happening within our business are even more important.

Too often we focus on past mistakes and allow hindsight to overwhelm planning. Put more energy into understanding just where you are, where you want to go and then mapping out how to get there.

When planning during uncertain times, action and progress are the barometers for measuring success. Stagnancy will flood the boat – be quick, decisive and most importantly know your bearings. Start with the fundamentals:

1. It's the planning process, not the plan itself. Don't let unpredictable outcomes derail your ability to follow through. Your plans should innately allow for flexibility and buffers for change.

2. Review, revise, correct. Repeat!

3. Hone in on a foolproof warning system, one that monitors changes and can highlight early warning signs of trouble. Pay closer attention to every detail.

4. Tighten focus, value your lucrative clientele and watch your cash flow.

5. Improve and streamline communication strategies within the business. Consider taking on a counter-intuitive mind-set. If it seems like the time to

cut down, resist the urge! Growth in times of duress has proven to promote longevity, and encourages business owners to be risk-takers who strive to survive. Well thought-out forecasts will dictate the best course for you. If you do decide that cuts are necessary, target specifically and avoid wide, sweeping cost reduction methods.

Remove your ego from the equation—that's right, you are not expected to know it all! Knowing when to ask for help and accept advice or support is a powerful quality, both humbling and intelligent. Remember, we are experienced and here to help with specific tools and resource designed just for businesses like yours.

Positive cash flow is also the time to consider applying for lines of credit and will allow for better terms and conditions to be laid out. Take this time to also foster a relationship with your bank - you never know when you will need to count on their good will.

Take the time during a rough patch to beef up your core—revisit fundamentals, train staff, manage client relationships and conduct regular financial assessments. Keeping busy will help keep you focused, which is the only way to overcome the hurdles and challenges.

The team at your local Mapua First Class Accounting office are here to help with accounting solutions that let you get on with running your business!! Call John or Flynn today on 03 540-2751 or visit us behind the Naked Bun.

## Big Firm Capability

Small Firm Personality

You get the best of both worlds with us

Locally owned personal service with  
nationwide support.



One stop accounting solutions that let you get on with running your business

Call Flynn or John today on 03 540 2751

email [info@firstclassaccounts.co.nz](mailto:info@firstclassaccounts.co.nz)

[www.firstclassaccounts.co.nz](http://www.firstclassaccounts.co.nz)



**NOW OPEN 7 DAYS A WEEK**

**9.30AM – 4.30PM**

FOR DELICIOUS BREAKFASTS AND LUNCHES

320 APORO ROAD, TASMAN.

03 5266742 [LUNCH@JESTERHOUSE.CO.NZ](mailto:LUNCH@JESTERHOUSE.CO.NZ)

BRING YOUR FRIENDS TO EXPERIENCE THE  
DELIGHTS OF TASMAN'S BEST CAFE (SINCE 1991)



Dr Keith Beasley M.S.D.

## "LOOKING FOR A GENTLE DENTIST?"

- Family and cosmetic dentistry
- Same day emergency care
- Competitive rates
- Hygienist

66-68 Aranui Road,  
Mapua (Behind Naked Bun Cafe)

03 540 3440 [office@onedental.co.nz](mailto:office@onedental.co.nz)



one dental

## IYENGAR YOGA



**Mapua Hall (School Terms):**

Tues: 6:00-7:30pm

Wed: 9:15-10:45am

Fri: 9:15-10:45 am

**Anna Timms**

**Certified Iyengar Yoga Teacher**

Ph: 027 540 3944

[atimms68@gmail.com](mailto:atimms68@gmail.com)

[www.eternallyyoga.com](http://www.eternallyyoga.com)



# Coastal Garden Club

**J**ohn Selwood from Elite Viticulture was a most informative speaker at our May meeting.

He highlighted many insights into the growing of grapes in this area. His firm contracts out 700 acres of vines in the Nelson/Tasman area, employing 60 to 70 staff, with extra folk being brought in during the harvest period. Mechanisation has reduced the need for staff by 60% and it is more efficient. John noted that machines don't ring in sick! Wasp stings are a problem for staff and although they have 100% netting covering the grapes wax eyes are still able to peck at some of the grapes.

He outlined the types of tasks involved, the different methods of pruning and the care of vines.

We learnt that there are two styles of pruning and that two-year-old wood is the most fruitful. To improve airflow, grape leaves are reduced either by plucking or by introducing sheep which eat the lower leaves.

He discussed wines that are best suited to this area. Pinot Noir and Pinot Gris are hand-picked and this accounts for their being higher cost brands. It was of interest to learn that each bottle of wine has a \$3.50 excise plus an extra \$1.20 for packaging.

There was considerable interest in this topic and the questions were many and varied.

In president Adrian's absence our vice-president Francesca welcomed members and conducted the meeting. Treasurer Marilyn's report was presented and a healthy balance both in current and term deposit accounts was outlined.

The planned trip to Taranaki has been canceled due to lack of numbers but members were told of two alternative organised tours to the rhododendron festival, one with Leisure Time Tours and the other with Twilight Travel Tours.

A very successful visit was made on the morning of the Garden Club's meeting to a garden in Flaxmore Road. Those who attended were impressed by its setting, the size and the splendid autumn colours. The club has been invited to return in spring and a member noted that it is even more spectacular then.

A visit to Neudorf Mushrooms is planned for 29 of May. Details will be emailed to members. Brian was thanked for his organisation of these interesting trips.

Afternoon tea was followed by Margaret leading the discussion of the flowers members had brought for display. After the raffle draw Gino concluded the afternoon with a plant auction.

Another happy Coastal Garden Club afternoon.

*Joyce Bullock*

## Popular Rock Camp Back for Youngsters

**T**he popular Rock Camp is back again at The Playhouse for a fifth time. This week of music and fun is designed for kids aged 9 to 15 of all musical ability and talent. The camp focuses on performance more than technique, encouraging students to form small bands on the first day of the course and practice throughout the week working towards a concert to be held on the Friday evening for friends, family and the public. The dates of the 2014 Rock Camp are Monday 14 July till Friday 18 July. (The second week of the July school holidays.)

Other elements like the history of rock music, a group song-writing session, and a trip to NMIT music department and Radio Works studio are also on the cards for the kids over the week, promising a learning environment for the participants and no chance to get bored.

The Playhouse is a fantastic venue for the camp with a full professional stage, lighting and PA gear for the campers to play on, plus a large backstage and outdoor area to run around on during down time. The camp is fully catered by the Playhouse chef, with a focus on healthy food options and children's dietary requirements...no deep fry at this camp!

The camp will be limited to 15 students, aged 9 to 15 years. The last camp sold out, so please make con-

tact early to insure your child's spot. It will be hosted by two tutors with guests tutors coming in during afternoons to work on specific skills.

Nic Roland and Bruce McGregor will be the head tutors for the week; both have a large amount of experience performing and playing with bands as well as working with young people.

The cost of the camp is \$350 for a full week's tutoring, this also includes food for the week and a live performance on the Friday night. Transport can also be organised daily.

Please contact Nic Roland on 540-2985 for more details about this event and a sign-up sheet.

**Steve Dawson**  
Mobile Marine Maintenance

- Outboard and Sterndrive Servicing
- Diesel Servicing
- Trailer Repair
- Genuine or aftermarket parts
- \$60+GST/hr

Ph 027 319 9941





# Tasman Bible Church

## Ordinary Christians



In one sense there are ultimately no “ordinary” Christians. Those who have placed their faith and trust in Jesus Christ are being re-created in the image of God and have been reborn to live forever with Him! In another sense, however, most of us are very ordinary Christians. We are not spectacularly gifted in a way that makes others miss a step as they walk toward us or gasp in awe when we walk through the door! The vast majority of us do not stand out in a crowd as being extra special or incredibly unique. We are ordinary Christians.

When we think of people in the Bible, we tend to call to mind those who did the spectacular. We highlight characters like Abraham, Moses, Joshua, David, John the Baptist and Paul. We may hold these special characters up as examples to emulate. But is this right? Are these pivotal Bible characters the ones we should seek to model ourselves on?

We need to recognise that these “heroes of the faith” were extraordinary. But most were not noteworthy because of who they were as people. Rather,

they come to mind because of the way God used them. They were “spectacular” because of the role they played in God’s plans, not necessarily because they were more gifted or super-spiritual than others who lived in their day. In fact, when these Bible heroes are looked at simply in terms of who they were “in private,” most of them were simply ordinary people called by God to do extraordinary things.

God does not call most of us to live spectacular, “Bible hero-type” lives. For 99% of us our calling is simply to live quietly and faithfully before an audience of One. Any greatness we have will be largely unknown and unseen. It will be the greatness of rightly living, quietly serving, faithfully praying, truthfully worshipping, generously and joyfully giving, selflessly loving, and repeatedly forgiving. These are the ordinary characteristics God desires in His people.

Those who live such ordinary lives may never hear the praise of others. They will never make headlines in Christian magazines or have books written about them. But they will be honoured by the One who matters most. One day the Lord Himself will greet such people saying, “Well done, my good and faithful servant.”

*Geoff Paynter*

## *Letters to the Editor...*

### **Old Masthead Wanted**

Many thanks for the wonderful jobs our editors do each month to keep us informed of happenings and events from around the coastal areas. But please bring back the masthead with Hamish, our Mapua icon, and illustrations of the sea, plant life and mountains beyond. We are truly blessed to have these amazingly beautiful assets.

Congratulations to the two wonderful 2001 artists, Merlene Earlam and Pat Perry, for illustrating these picturesque images of our beautiful coastal lands. You have captured what has not been lost over time.

Now we would like to offer a contribution which we have entitled “Appreciating What We Have.”

A holidaying English Couple who visited our home and village recently, once again, drew our awareness and appreciation of the uniqueness of living in Mapua and, the joys of walking our treasured coastlines. We already knew we were part of this uniqueness, but as life flashes by, we forget to take those wondrous moments to just pause, to breathe in the sea air, and to appreciate the tranquillity of local birdsong.

In a moment one may gaze at the ever-changing panoramic estuary views. The vista includes merging seas, farmlands and vineyards all dotted with pictur-

esque native and exotic trees. The view may then take us back to the yonder maze of the pine trees on Rabbit Island and the rolling seas caught in the cut, making their way as a tranquil flow into the treasured estuary.

An evening walk along the estuary at this time of year will often bring the thrill of walking alongside cruising stingrays, their camouflage given away by the odd, wayward body flutter above the waterline, or the streamlined trail over the glass-top water’s surface.

How truly blessed we are to live in this natural paradise. Let’s take those moments to renew our spirits throughout the autumn and winter months and to, just appreciate being a part of this superb destination.

*Mary Forrest*

### **Masthead Not Liked**

The new masthead, black on grey. Brilliant? It is pathetic! I hope it is only interim. Why change? What is wrong with the Pat Perry/Merlene Earlam masterpiece? If it must be changed I trust someone’s artistic talent will be tapped to display a banner replacement that attractively promotes our district and the activities of our residents.

*Ivan M Wells*

### **TDC Proposal 'Alarming'**

I was most alarmed to read in Hugh Gordon's May column that a meeting of the Community Association on 14 April supported a proposal from Tasman District Council officers for TDC to construct shops on the land previously occupied by the aquarium. There are a couple of vacant shops at the wharf already. Is it right for TDC to compete with the existing landlords? The TDC can't even properly maintain the buildings it owns now—just look at the state of the roof over the Smokehouse! TDC should stick to its core business and attend to important matters such as reducing debt and providing a reliable water supply for Mapua.

When submissions on the proposal to restrict parking at the wharf were called, I opposed it on the ground that it did not go far enough. Most of the submitters wanted a family-friendly pedestrian area, and I support that. Do they realise that the outcome is only for no parking in the summer school holidays and fine Sundays in the rest of the year? Vehicles are still allowed to drive there and trailer boats can be launched there at any time. Reversing a boat trailer is not family-friendly.

The submission I made was that part of the old aquarium site should be used for a one-way road around the old coolstores, exiting onto Iwa Street. It should also provide some short-term and disabled angle parking, and a loading bay for good services vehicles. This would allow bollards to be erected around the pedestrian area, keeping all vehicles out, always. The aquarium was on land owned by TDC and at least one councillor has publicly supported buying some land fronting Iwa Street to make this scheme possible.

A rumour has it that the Golden Bear may take over the space occupied by Hamish's Ice-cream Parlour plus that previous used by the Cool Change Gallery in that building (recently purchased by TDC with our rates). This adjoins a Residential Zone. Surely TDC's planners know better than to allow this! Heaven forbid that the Golden Bear should be allowed to expand their drinking onto the grassed picnic area. This is a nice sunny area where children can play and not have any obligations to the local businesses. TDC also owns vacant commercially zoned land at the corner of Tahi Street and Aranui Road – this may be a better site for a brewery and pub.

With a totally pedestrian area at the wharf, there would be a problem with launching boats, and I suggest building a proper boating facility at Grossi Point. A present the beach is being damaged by powerful four-wheel-drive vehicles launching and retrieving boats there. It would be far better that a proper concrete launching ramp be constructed for trailer boats, plus another for canoes, centre-board yachts, and waka at Grossi Point. In the long term, a small marina could be constructed, which would be far safer than mooring larger boats in the main channel.. To avoid disturbing the old pa site, extra parking can be obtained by dredging the creek and using the material to reclaim extra land.

Another point I made to TDC at their annual plan hearing is that most recreational facilities administered by TDC come under their Community Development Department. Recreational boating and sea fishing are very popular pastimes for the residents of Tasman District. Why then, are launching ramps and other recreational boating facilities administered by the Engineering Services Department?

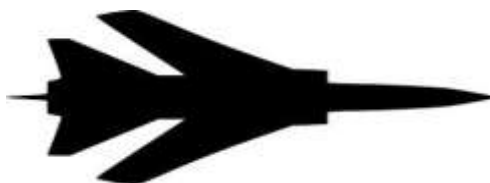
*Colin Walker, Mapua*

## **Two Books that Blokes Will Like**

I picked up Rowland White's *Storm Front* last month, and while I don't often dip into non-fiction, much to my surprise thoroughly enjoyed his style of writing, not to mention the great tale and fascinating historical photographs.

Seeing in the blurb that one of his other published books was on Vulcan bombers really sparked my interest. As an 18-year-old in the Royal Air Force my very first posting was to RAF Waddington, one of the Vulcan home bases.

*Vulcan 607* tells the tale of the longest bombing run in history; of taking the destined-for-the-scrap yard Vulcans into the Falklands conflict with the mission of destroying the runway at Port Stanley.



Everything seemed weighted against the task. The distance was 4000 miles beyond the Vulcan's range, and the logistics to get an aircraft there are mind-blowing. Battling massive electrical storms, requiring

17 inflight refuelling operations, 15 tanker aircraft, overcoming a myriad of problems such as fuel leaks, and then actually to hit the target with devastating effect.

Rowland White brings the story alive. If you like aircraft, like true stories of improvisation and make-do, and just plain courage, then you will find this worth reading. This book is available in the Mapua Library.

*Bob Phillips*



# Tasman Ladies Golf

The 9Hole golf ladies at Tasman have had a busy time in the last week or so.

On a Wednesday in May Nelson Club challenged us for the Biddy Smith Challenge Trophy. This is a regional competition played with a team of four players. There were some closely-fought matches, but in the end the Tasman ladies were on form and managed to win all of their matches. So Tasman retains the trophy for another day. This month we will be challenged by Greenacres.

Tasman club held its annual 9Hole ladies tournament on 20 May and what a great day we had. The weather was magnificent and if some of the players were disappointed with their golf, they only had to admire the spectacular views, to make their day out worthwhile!

We had 24 entries, from Tasman, Totradale, Nelson, Greenacres, and Motueka. Our theme for the tournament was 'Made in Tasman' and a huge thanks to the amazing generosity of our local community who donated fantastic prizes. I would like to thank the following artists: Sue Newitt, Steve Fullmer and Darryl Frost. Thanks to four local vineyards for their beautiful wine: Kina Cliffs, Kina Beach, Renato and Blackenbrook. Also to Jester House for vouchers, to enjoy their delicious food and also to 'The Grind', at Tasman Store for their great coffee!

Thanks also to our green-keeper, Phil, the course was in wonderful condition, to Kathy our manager for all her help, to the 18hole ladies for doing the catering and scoring and off course to all the wonderful 9hole ladies at Tasman for all their enthusiasm, help and support!

*Pam Robert, 9Hole Convenor*



**Mapua Upholstery**  
for all your upholstery needs....

**Eileen Searle**

eileen.searle@xtra.co.nz      28 Dawson Road  
03 540 2428      RD1 Upper Moutere



**MAPUA AUTO CENTRE**  
"YOUR AUTOMOTIVE SPECIALIST"

Fully Equipped Automotive Workshop	All Makes & Models	6 Courtesy Cars W.O.F.
--	-----------------------	---------------------------

20 WARREN PL, MAPUA, NELSON 7005 | PH 03 540 2180



## Motoring with

June 2014

**MAPUA  
AUTO CENTRE**  
"YOUR AUTOMOTIVE SPECIALIST"

### EGR Valve Its Function

The exhaust recirculation (EGR) valve helps your car improve how efficiently and completely fuel is burnt. It does this by recirculating a portion of the exhaust gas through the combustion process.

This process results in a cooler, more complete burn of the fuel, which helps prohibit the formation of some harmful gases, therefore decreasing the volume of noxious emissions out of the exhaust and into the atmosphere.

The EGR valve is vital to a vehicles emission controls as it helps keep huge amounts of unburnt fuel being released. Unburnt fuel is thought to be a huge contributor to greenhouse gas build-up and is why the EGR system became mandatory on all new vehicles several years ago.

The EGR valve is controlled by the vehicle's computer (ECU) which allows a specific amount of your exhaust back into the intake manifold. This exhaust mixes with the intake air, cooling the combustion process.

The exhaust recycled by the EGR valve also prevents the formation of Nitrogen related gases, also referred to as NOX emissions. A faulty EGR valve can cause an increase in these gases.



A dirty EGR Valve

An EGR valve can become stuck or malfunction, and when this occurs engine performance is compromised, with symptoms like rough idle, bucking on acceleration and even cause the engine to stop completely. The only remedy is for the valve to be repaired or replaced.



A clean EGR Valve

If you have concerns with the performance of your vehicle, we recommend you have this checked promptly.

Happy & safe motoring from the team at

**MAPUA  
AUTO CENTRE**  
"YOUR AUTOMOTIVE SPECIALIST"

## MAPUA PODIATRY

**Justin F Powell** NZDip.Pod, SRPod.

- ♦ for immediate relief of painful feet

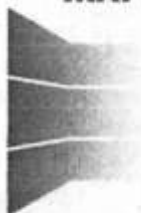


- ♦ bringing specialist footcare to your community
- ♦ for the full range of modern foot treatments

101A Aranui Rd, down the mossy driveway

Phone: 5403758 or 021 122 2268

## MAPUA CARPET CLEANING



**QUALITY FRIENDLY SERVICE  
CLEAN FRESH CARPETS & RUGS  
UPHOLSTERY HOUSE & CAR  
FREE ON SITE QUOTES**

**JANINE HEPBURN PH 540 3730 / 027 6700061**

*Coast Store Gallery*



### THE COOL STORE GALLERY

showcases works of over 100  
established & emerging artists from  
Nelson & the West Coast regions.

*Come & browse & chat with our  
friendly staff.*

Open Daily in summer 10am-5pm  
later in weekends

Tricia Morrison  
7 ARANUI ROAD  
MAPUA NELSON  
Wk 03 540 3778  
Hm 540 3005

# ZOOM

## REDKEN

5TH AVENUE NYC

We welcome back from maternity  
leave Chantelle Bennett to join  
stylists LJ, Peter and Shannon,  
and beauty specialist Andrea.

Tuesday - Saturday 9am till 5pm  
Late night by appointment

Ph 03 540 2333 [www.zoomhair.co.nz](http://www.zoomhair.co.nz)

## First-Rate Flooring

Phone Brian

027 439 9038

Email: [brianalexander@xtra.co.nz](mailto:brianalexander@xtra.co.nz)

- Quotes & Advice
- Floor Preparation
- Sheet Vinyl
- Vinyl Plank & Tile



Mapua 540 2068  
105a Aranui Road

Motueka 528 8880  
2 Wilkinson Street

## coast & country

### CHIROPRACTIC CENTRE

[www.rubycoastarts.co.nz](http://www.rubycoastarts.co.nz)

RCA

For local arts information

ruby  
coast  
arts

Visit the website for information about  
Ruby Coast art events, exhibitions,  
artists, craftspeople and galleries.

**RCA Members' Open Studios Trail  
Maps** available from The Naked Bun.  
Enquiries : [info@rubycoastarts.co.nz](mailto:info@rubycoastarts.co.nz)



"God's Word For Today's World"

## Tasman Bible Church



Part of the Tasman  
Community for over 50  
years, our desire is to  
help young and old  
alike come to know the  
God of the Bible.

mainly  
music

4G  
youth

— Church Service on Sundays @ 10:00 —



# Hills Community Church



## The Journey Ahead

In our family there have been two milestones recently for our kids. The first is that our eldest boy has gone on his first school camp. The second is our eight-month-old, Emily, learning her first words. Apparently babies are meant to first say 'Dadda,' but with Emily it has been 'Ello,' 'Brother,' and now 'Mum'... I'm still waiting for some verbal recognition. It is great, though, as a family, to celebrate these milestones as they come along.

The same is true for the church family here in Mapua. On 8 June Hills Community Church will celebrate a significant milestone in the life of the church. This year is the twentieth anniversary of the Mapua churches joining together to be an independent community church. It is real privilege to be able to be part of the life of the church for this phase of the journey.

When we celebrate an anniversary we tend to think that it is about celebrating the years that have gone by.

I am struck though that when we celebrate a milestone, like Emily saying her first words, we are celebrating both the journey so far and, even more importantly, the new phase of life being ushered in. The learning of a few words is the beginning of something utterly new, transformational and exciting.

And so it is with HCC. It has been a great journey over the last 20 years, but an even greater journey is the one that lies ahead.

*Blessings in Christ, Rev John Sherlock*

**Hills Community Church** is a community-based church with historical roots in the Anglican, Presbyterian, Methodist and Pentecostal traditions. We offer traditional and contemporary worship in an informal and relaxed style. Visitors and newcomers are most welcome.

**Sunday Worship:** Traditional service 9am, Contemporary service & Children's programme including crèche 10:30am; Holy Communion celebrated at both services on the 2nd and 4th Sundays with morning tea in-between. 1st Sunday of each month: one family-style service @ 10:30am followed by a shared lunch.

### Weekly Calendar:

Wednesdays: 10am-noon—Kidz n Koffee. Open to parents-caregivers-pre-K kids—a great way to make new friends!

Fridays: 10am-noon—Craft n Coffee—learn a craft & share a laugh! Open to all, crèche provided. Drop-off for area food bank – Bring your non-perishable food items to the church (122 Aranui Road) on Friday mornings between 9am and noon.



## Cycle all year

Plan a day out and explore sections of The Great Taste Trail. We can arrange a route to suit you. All ages and fitness catered for.

- One way hires.
- Own bike pick up or drop off.
- Route planning and advice.
- Explore new sections of the Great Taste Trail without having to cycle a long way.
- Wineries and artisans tours
- Group and corporate activities available
- All our services are available to cyclists with their own bikes.

Let us help you plan your day out  
phone Nicky or Lisa on 03 5432245  
you decide • we provide

## Advertising Costs

Ads go by the size in column centimetres. Columns are 8.5cm wide and costs are as follows:

\$2.50 per cm up to 6cm

\$3 per cm up to 10cm

\$4 per cm over 10cm

With 20% discount for long-term advertising (3+ months) and prompt payment.

**Kevin Brown**  
Chartered Accountant

22B Brooks View Heights, Tasman  
RD1 Upper Moutere  
Tel: (03) 526 6263  
Cell: 021 029 87087  
Email: kevin.brown@clear.net.nz

## Postal Delivery

We can post you the *Coastal News*. To take advantage of this post \$20 with your name and address to Coastal News, PO Box19, Mapua Store, 7058, or email [coastalnews@mapua.gen.nz](mailto:coastalnews@mapua.gen.nz)



## Shanti Massage Therapy

Relaxation and Deep Tissue Massage

**Kim Saunders Stevenson**  
Certified Massage Therapist

178c Old Coach Rd, Mahana 540-3911

FUNDRAISER



# **Anniversary Ball**

**Saturday 23<sup>rd</sup> August 2014**

**with Nelson Big Band**

**7:30 pm - \$35 pp** tables of 8



**Tickets: Perrys Auto Services & Forest Fusion**

Tables of 8 can be reserved for up to two weeks  
to help with collecting money from other people.

Please bring savoury or sweet plates for the supper room shared supper  
Cash bars & eftpos available

Have fun! If you wish ... bring table lights/flowers etc to enhance your tables!  
White table cloths & minimum table decoration is provided!



# MOUTERE INN



THE CENTRE OF THE MOUTERE SINCE 1850

- Craft Beer
- Local wines
- Bar meals
- Lounge bar
- Real Ale
- Live music
- Evening Dining
- Rooms

**ESTD 1850**

**All welcome**  
Available for functions and private bookings

## COMING EVENTS AT THE MOUTERE INN

- ❖ **LIVE MUSIC 7PM FRI 6<sup>TH</sup> JUNE "NEILLY RICH"**  
Neilly Rich play a mix of contemporary and country music that has gathered them a loyal following in NZ and Australia. Recipients of numerous accolades both individually and as a duo they will be well worth coming to see.
- ❖ **FRIDAY 13<sup>TH</sup> JUNE - THE DARKSIDE SHOWCASE**  
Friday the 13<sup>th</sup> unlucky for some, unless you'd like a pint of Oak aged black rye, a sniff of the Apocalypse Black IPA, or even a swallow of the Zebra Zebra Black Whiff.
- ❖ **SUNDAY 22<sup>ND</sup> JUNE MID WINTER CHRISTMAS LUNCH**  
It's Mid Winter and time to get together with family and friends and enjoy a delicious Mid Winter Christmas lunch. There will be a set menu of either roast Turkey or Lamb with all the trimmings, and for desert either Christmas pud or Sticky date pud. Two sittings, one at 12pm, and another at 2pm. \$25 bookings essential.
- ❖ **FINE DINING EVENING SAT 28<sup>TH</sup> JUNE 7pm \$45**  
We will be offering a relaxing evening, of fine dining over five courses, this month with a Christmas theme. Bookings essential, check our website for menu details.
- ❖ **DON'T FORGET**  
Raffle every Wed 6pm with Chase the Ace and Steak Wed.  
1<sup>st</sup> Thurs Folk Night. This month the 1<sup>st</sup>.  
2<sup>nd</sup> Thurs Quiz Night. This month the 8<sup>th</sup>.  
Last Thurs \$20 Ribs Night. This month the 29<sup>th</sup>.

**THE MOUTERE INN**  
THE CENTRE OF THE MOUTERE

**Phone 543 2759**  
[www.moutereinn.co.nz](http://www.moutereinn.co.nz)

## Mapua Early Childhood Centre

**2 Toru St, Mapua Ph: (03) 540 3668**  
**OPEN: Monday to Friday 7:30am-6pm**

- Qualified Educators
- excellent ratios
- Pre-school programme
- affordable fees
- Sessions or all day facilities
- WINZ subsidies
- Separate areas for over and under 2s



**Riverside Café**  
289 Main Rd Moutere Highway  
Tel: 03 526 7447  
E: [riversidecafe.news@gmail.com](mailto:riversidecafe.news@gmail.com)

**Open 7 days a week, plus Sat evenings!**  
YES we are staying open 7 days a week to serve coffee, delicious cakes, and lunch daily, plus dinners on Saturday evenings from 6pm

**Mulled Wine by the Fire!**  
Come and get cosy by the fire, with a glass of our speciality mulled wine, or perhaps a chilli-moccacino!

**Social gatherings, Cycle Trail Pit Stop**  
Our comfortable & beautiful café could be the ideal spot to meet for social or business gatherings. We have various catering options, or just keep it casual and see what takes your fancy on the day. We are on the Great Taste Cycle Trail!

**Riverside Café**  
Our menu always offers a seasonal selection of wild meats, local specialties and lots of home-grown organic produce presented in an inspiring & delicious menu. Indoor & outdoor seating. Children welcome; we have a cool playground!



 [RiversideCafe&CommunityNZ](https://www.facebook.com/RiversideCafe&CommunityNZ)

## Pastel Artists NZ

The past month has been very quiet but productive. Some members have returned from their sickbeds or holidays and other members have now gone away.

We have had an in-house challenge and some interesting discussions, but nothing overly exciting this round.


The biggest thing to happen is Alice Reade, our junior member, is staging her very first solo exhibition. She was the winner of the 2013 Refinery Art Space Student prize at the Impressions Art Awards and the prize was the above opportunity.

The Exhibition will run from 19 to 31 May..

We have a few different things lined up for the next month so I should have more to write about.

Visitors are always welcome to the Mapua Hall on a Tuesday morning between 9am and noon, either to see what we are doing, or have a try yourself.

Enquiries to Glenys Forbes, 540-3388



**RUBY BAY**  
**Yoga+**  
**Ayurveda**  
Centre

*Yoga with Robin*

**Wednesday - 9:30 AM - Call for availability**  
**Wednesday - 5:00 PM - Drop in Class, all levels**

[rubbybayyoga@gmail.com](mailto:rubbybayyoga@gmail.com) **540 2113**  
**[www.rubbybayyoga.com](http://www.rubbybayyoga.com)**

**Ruby Bay Takeaways**  
**172 Stafford Drive**  
**Ruby Bay**



**Phone orders welcome**  
**5403530**

**Fish and Chips**  
**Home made burgers**  
**Drinks and ice cream**  
**OPEN 7 DAYS**

For a full menu and opening times please visit our website or give us a call.  
**[www.rubbybaytakeaways.co.nz](http://www.rubbybaytakeaways.co.nz)**

# THE SHED MAPUA

Hours Monday through to Saturday 8.30 – 5.30pm  
Sunday 10.00am – 1.00pm

## WHAT WE HAVE AND CAN PROVIDE:

- **Green waste** drop off.
- **Soil.** We also stock lawn seed and lawn fertilizer.
- **Gravels**, for driveways, paths, and water tables.
- **Barks.** Stringy, forest, nuggets.
- **Compost**, blood and bone and manure compost.
- **Potting mix** in bags and also compost /blood and bone in bags.
- **Fertilizers.**
- **Crushed shell**, great for paths, around shrubs.
- **Chook food**, laying pellets and wheat along with grit.
- **Irrigation products.**
- **Launderette** for all your washing and drying needs.
- And a smile.

## WE ALSO DO:

- Ready Lawn .
- Excavator work, trenching, footings, auguring.
- Driveways
- Stump removal
- Landscaping
- Property maintenance
- Lawn mowing/Garden up keep
- Retaining walls
- Paving
- Fences wooden/ Steel fencing (the same on both sides)

We now have a gift area full of gift ideas, from pottery to crystals, geckos & soaps.

**THE SHED MAPUA**  
**15 WARREN PLACE**  
**MAPUA**  
**540 2898**







# The Playhouse Cafe

## JUNE 2014 What's On Guide

Thurs to Sat 11am til late,  
Sun 11am til 4pm

Call us on 5402985 for bookings, Free Transport to and from Mapua  
FREE PRIVATE VENUE HIRE ALL WINTER FOR YOUR PARTY

M T W T F S S

### SPRING WEDDING SPECIAL

Book in Sept or Oct  
- FREE VENUE HIRE

and a  
BOX of BUBBLES ON US!

							31	1
							Grandiose Burlesque \$20 pre-sale Annual big show! This will sellout!	Open 11am till 4pm
2	3	4	5	6	7	8		
Open Queens Birthday Monday 11am till 4pm No Surcharge			Open 11am till late	The Deep End Improvised Comedy \$15, \$12 kids 730pm	Wedding during the day  Free for your private event in the evening	Open 11am till 4pm		
9	10	11	12	13	14	15		
		Nayland College Night Dinner from 530	Tiny Ruins Amazing folk music from ALK 5 piece band \$20, Show 8pm Dinner 6pm	Penny Ashton Promise and Promiscuity Comedy Arts on Tour NZ \$20, Dinner 6pm Show at 8pm	Mapua Charity Ball Please contact us for more details	Open 11am till 4pm	Private Function in the evening	
16	17	18	19	20	21	22		
WE WILL OPEN ANY DAY OF THE WEEK FOR PRE BOOKED GROUPS OF 8 OR MORE			THE IRISH WHISKEY MURDER MYSTERY Thursday, Friday, Saturday extra shows added!...26th, 27th June If you like father ted or Mrs browns boy's style humor, you will love this show. Dress up 1920's style and come solve the murder mystery. Show 8pm, Dinner 6pm. \$20, group discounts available				Open 11am till 4pm	
23	24	25	26	27	28	29		
Coming up in July 5th: Nelson Big Band 1940's night 17th: Andrew London Trio 25th and 26th: Paul Madsen's 1980's Music Night 30 BOOK NOW OR MISS OUT			THE IRISH WHISKEY MURDER MYSTERY Thursday, Friday New shows added due to popular demand  Call 5402985 now for bookings		Pearl Jam Tribute Night \$10, Music from 8pm	Open 11am till 4pm  Fundraiser Quiz Night from 5pm Dinner available all evening \$10 per person		

**WWW.PLAYHOUSECAFE.CO.NZ or call 5402985**



"WITH AUTUMN UPON US WE HAVE SOME GREAT NIGHTLY DEALS FOR YOU  
AND YOUR FAMILY TO ENJOY"

**Monday -STEAK NIGHT**

"HUGE" 500g steak mash or fries and  
choice of mushroom, peppercorn or  
garlic sauce only \$19.00

**Tuesday -TUESDAY JAM**

Come down and Jam with Ron Valente  
(Gypsy pickers) all musicians welcome,  
Starts @ 7pm, great night of entertainment

**Wednesday -PIZZA AND PITCHER NIGHT**

Any large pizza and 1.8 litre pitcher of  
Carlsberg only \$30 + FREE POOL

**Thursday -CURRY NIGHT**

Delicious Indian and Thai curries with  
basmati rice still only \$15.00

**Friday -WIN CARLSBERG V.I.P TREATMENT**

Drink Carlsberg during the week to go  
into the draw to WIN 2x Super jugs 2x Large  
Pizzas and the best seat in the house to watch  
Super 15 Game @ 7.35 Friday -Drawn 7pm

**Sunday -OUR FAMOUS "SUNDAY ROAST"**

Beef or Pork with all the trimmings \$19.50  
Served all day from 12pm -Please book

67 Aranui rd, Mapua Ph (03)5403465





# MAPUA AND DISTRICTS BUSINESS ASSOCIATION

Coordinator: Janet Ph 540 3364

## MEMBER PROFILE

MBDA has given **Ruby Bay Takeaways** the opportunity to introduce our family run business, so I would like to take this opportunity to say thank you.

My name is Ken and I am the owner/operator of Ruby Bay Takeaways and my right hand man and fully qualified chef is Craig. The rest of our team is made up of Jade, Jacob, Ella, Josh and Tom. Craig and I are both locals from Upper Moutere, where we ran the local fish and chip shop; we now find ourselves back in the business with a new venture in Ruby Bay.

We pride ourselves on producing quality takeaways, with much of our food being home made at the shop; from our mouth watering tartare sauce to meat patties, batters and flips..... Also, keep an eye out for our home cut fresh chips which we will be introducing over the next few months.

A big thank you to the local community for supporting us as we start out, we look forward to being able to serve you the best fish and chips in Ruby Bay!

Please tell your neighbours and friends.

*Ruby Bay is looking more and more like a Destination!*

**[www.rubybaytakeaways.co.nz](http://www.rubybaytakeaways.co.nz)**

**172 Stafford Dr  
RUBY BAY  
03-5403530**

*Please keep an eye on our website for our up to date trading hours and menu options.*



**[www.rubycoastmouterehills.co.nz](http://www.rubycoastmouterehills.co.nz)**



This month we profile two of our newer business members in Ruby Bay. Have you noticed the quiet transformation happening in Ruby Bay? There is an interesting collection of businesses becoming established along this peaceful scenic route. This is now a very pleasant area to walk or bike through and the businesses add an opportunity to stop and enjoy what they have to offer - from art to food, workshops, music, clothing and more. Check them out next time you're passing.

## MEMBER PROFILE

### The Wee Shop Organics



Katerina and Seija have created an oasis for those people passionate about vitality and healthy living **The Wee Shop Organics**. Their philosophy is to bring nutritious organic food, health and awareness to the community to be part of the growing trend toward local resilience. The Shop is colourfully abundant with delicious goodies arranged in a cottage country style on shelves and cupboards of rough sawn wood. In less than a year the business had snowballed into something quite compelling. You can find fresh seasonal fruit and veggies, superfoods, broad selection of teas, coffee alternative Teeccino, bulk section with grains, dry fruits, nuts, seeds and spices. Milling or flaking of the grains is available on request. You will be able to find spreads, sweeteners, treats, oils, condiments and much more. For fans of frozen goods there are delicious ice creams and frozen berries loaded with antioxidants. In the same building we offer art classes, sewing, pottery and martial arts for kids, Italian classes, Yoga and Chi Gong for adults. Come and check it out.

**155 Stafford Dr, Ruby Bay. Ph 540 2657**

**E: [weeshoporganics@gmail.com](mailto:weeshoporganics@gmail.com)**

**Hours: Wed 11-5, Thurs 11-6, Fri 11-5 and Sat 10-5**

**Supporting local businesses since 1992**

# Noticeboard

**Motueka Social Dance Group's** next dance will be 21 June, longest night of the year, at Mapua Hall starting at 7:30pm. The dress theme will be black & white. Admission is \$6 pp plus a supper plate. There will be live music & dance prizes as well as raffles. All are welcome. Contact Lloyd 528-0617.

Another "**Senior Moments**" lunch will be held on Thursday 19 June at the Hills Church cafe from 1130-1330. Guest speaker will be local artist and storyteller extraordinaire David Kemp. It will be cold enough for some (heart) warming soup and breads, so if you are over 60, want to connect with others, swap some stories, relax and enjoy a nice warm lunch, please ring Henk or Maryke, 540-3498 for catering purposes.

**Ruby Coast Newcomers Social Group:** meet new people, make new friends. We have coffee at 10am last Friday of each month at Tasman Store and hold ad hoc day & evening social events. Info: Vivien/Richard at 526-6707, email Viv at vpeters@xtra.co.nz, or just turn up.

**Community Association:** Mapua & Districts, General Meeting, Mapua Hall, Monday 9 June at 7pm. The meeting will kick off with a public forum so everyone welcome to have their say.

The **Mapua Mosaic Project** is moving into construction phase. If you wish to be on the mailing list to receive notifications of mosaicing sessions, please contact Bridget on 540-2461 or bridgetcastle@xtra.co.nz. The project is partially funded by the Mapua Community Trust and by Creative Communities NZ through the Tasman District Council.

**Coastal Garden Group** meets first Thursdays, 1pm, Tasman Bible Church Hall. Members, guests and visitors welcome. Ngairi, 540-3193

**Probus Club** meets first Fridays. All retirees most welcome. Enquiries to Pres. Stan Lawn, 540-2699.

**Moutere Hills Rose Society.** Are you a gardener with a special love of roses? We meet monthly - contact Margaret 03 528-8477 or Cynthia 03 528-8664.

**Fair Exchange:** We meet the second & fourth Wednesdays of the month. 9am at Hamish Café to exchange homemade or homegrown items. Info: Debby, 540-2942 or DLBamfield@gmail.com.

**Skye Harvest Extra Virgin Olive Oil :** 2013 Frantoio, available fresh from the producer. 750ml \$20. Ph 540-2698, email mcleodsarah@xtra.co.nz. Orders delivered or call in 113 Seaton Valley Rd Mapua.

**Qi-gong,** Yuan Gong form. weekly in Mapua. For information contact Marianne, 546-8584 or bmtc@xtra.co.nz

**Tuesday jam / open mic night:** Ron Valente [Gypsy Pickers] hosts and performs every Tuesday from 7.30pm at The Tap Alehouse & Restaurant in Mapua.

**Women's Recreation Group** - meets outside Mapua Mall Thursday mornings. Leaves 9.15am for 1½ hour walk. Route varies. Join us whenever you can. Some members may cycle. Info Lynley 540-2292.

**Toy Library:** extensive selection of toys, puzzles & videos for children 0-5yrs. Mapua Hall every 1st & 3rd Tuesday, 10-11.30am & 6.30-7.30pm. Phone Anja, 544-8733, about membership or casual hire.

**Kidz 'n' Koffee playgroup:** 10am – noon, Wednesdays during school term at Old Church Hall, Aranui Rd. All parents and caregivers welcome, we cater for 0-6 yrs. Gold coin donation for a delicious morning tea. Come and make some new friends. Info: Debbie, 543-2915

**Daytime Book Group:** Meets first Tuesdays at 9.45am. New members welcome. Phone Mary 540-2450 or Anne 540-3934

**Mapua Art Group** meets in the Bill Marris Room at Mapua Hall every Thursday morning from 9 to noon. Like-minded artists get together to paint, draw and help each other in a fun and social environment. All levels and media welcome. \$5 a session includes morning tea. Tables, chairs and easels provided. Lisa Chandler 540-3933.

**Mapua Friendship Club** meets at Mapua Hall on the 3rd Thursdays, for a game of indoor bowls and bring a plate afternoon tea. New members are enthusiastically welcomed, no prior bowling experience needed, our game is non-competitive, just a lot of laughs. \$3 door fee and 20¢ raffle. Contact: Val 540-3685.

**Spinners, Knitters, Weavers** – Wool Gatherers meet at Mapua Hall, second Tuesdays, 10am. All welcome.

**Joie de Vivre** Vintage Art and Craft Studio. Alterations and Sewing Repairs. Ph: Marijke Lups 03 540-3498

**Olive oil.** Delicious Leccino 2013, \$20 750ml. Ph 526-6288 fulford.kina @xtra.co.nz. Kina Olives.. We will deliver.

**Recycling:** Printer & Photocopier cartridges can be left at Tasman Bay Vets, 69 Aranui Rd, 8-11am & 3.30-6pm. Consider reducing landfill and support fundraising. Managed by MDBA with thanks to Tasman Bay Vets.

**Need technical help?** Bought a new smartphone / tablet /computer and can't set it up? Can't connect your Blu-Ray player? Don't know how to transfer photos from your camera? Local help is at hand! Average job price only \$30! Basic web design also available - pages start from just \$35. Call Sam, 544-0737.– sam@sambennett.co.nz

**YOGA with Robin** - Classes weekly. All levels welcome. Call 540-2113 for class times & information. www.rubybayyoga.com